

# Update instructions

## SimaPro desktop 10.4 to 10.5

**Title:** Update instructions SimaPro desktop 10.4 to 10.5

**Written by:** Michiel Oele, Ruba Dolfing Fanous, Veronica Grace SimaPro B.V.

**Version:** 1.0

**Date:** July 2026

**Copyright:** © 2026 SimaPro B.V. All rights reserved.

SimaPro grants the right to distribute and print the unchanged PDF version of this manual for non-commercial purposes only.

Parts of the manual may be reproduced in other work only after permission and if a clear reference is made that SimaPro is the author.

---

## About SimaPro

SimaPro is life cycle assessment software that helps organizations measure and analyze the environmental impacts of products across their entire life cycle. Built on extensive datasets and established scientific methods, the software provides transparent insights that support product development, sustainability strategy, and environmental reporting.

Used by industry and academia in more than 90 countries, SimaPro enables advanced modeling and scalable environmental impact calculations across teams. With more than 35 years of development behind it, SimaPro is widely trusted in the global LCA community. SimaPro is part of the One Click LCA group.

### Contact us

[support@simapro.com](mailto:support@simapro.com)

[simapro.com](https://simapro.com) | [support.simapro.com](https://support.simapro.com)

# Table of contents

<b>1</b>	<b>Introduction .....</b>	<b>4</b>
1.1	What to expect after running a software update	4
<b>2</b>	<b>Updating the SimaPro software.....</b>	<b>5</b>
2.1	Updating the SimaPro database server (multi-user versions only)	5
2.2	Procedure for updating single-user and multi-user client	5
<b>3</b>	<b>Contact us.....</b>	<b>6</b>

# 1 Introduction

This document describes how to update your current SimaPro desktop (formerly SimaPro Craft) software and database from version 10.4 to the latest version 10.5. If you are updating from older SimaPro version, please follow the [Full Update](#) manual instead. In the [What's new in SimaPro 10.5](#) manual, you will find information about the changes in the data, methods and software.

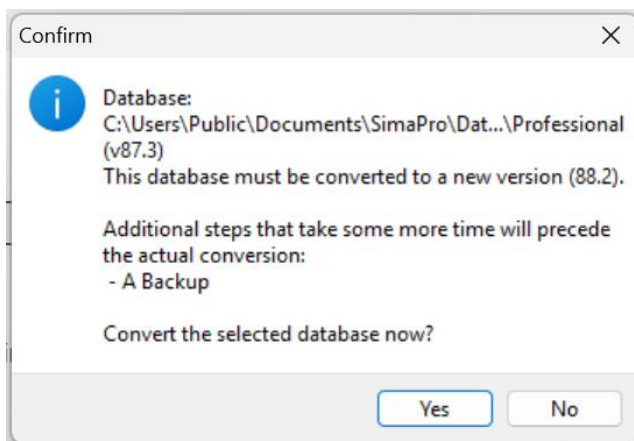
If you are currently using SimaPro version 10.4, you only need to run a software update. This will upgrade your SimaPro single-user or multi-user client software to SimaPro 10.5. For multi-user licenses, you also need to update the SimaPro database server ([see section 2.1](#)). Please read on for detailed instructions. Should you still have questions, please contact your local [SimaPro partner](#) or SimaPro Support by email at [support@simapro.com](mailto:support@simapro.com).

## 1.1 What to expect after running a software update

When you perform a software update, you essentially get a newer software version that contains improvements, new features and less bugs. Note that a software update does not change any library, project data or methods in your database, hence, your results should stay the same.

With an update to SimaPro 10.5, there are changes in the database technical format. After you update the software, you will need to do database technical conversion when you first open your database in SimaPro 10.5, followed by performing a backup. This allows you to open your SimaPro 10.4 database with SimaPro 10.5 software. After that, you cannot open this database with the previous SimaPro version anymore, but a backup is made available.

**Note:** your database contents will remain unchanged despite this technical conversion.



## 2 Updating the SimaPro software

### 2.1 Updating the SimaPro database server (multi-user versions only)

#### Single user vs. multiuser

If you are working with a single user SimaPro license please start with [section 2.2](#). Updating the database server is only relevant for multi-user licenses.

We recommend that multi-user updates are done by your network administrator. Please begin by updating the SimaPro database server. It is important to note that any defined Aliases remain intact after the update. To update the SimaPro database server:

1. Download the server installation file [SetupServer1050.exe](#) to the machine running the SimaPro database server.
2. **Important:** right-click **SetupServer1050.exe** and select *Run as administrator* to start the installation.
3. Follow the instructions in the setup wizard. You may be asked for your SimaPro registration name and code. The current SimaPro database server software will be uninstalled and then replaced with the latest software. Note that your database(s) will **not** be uninstalled!
4. If you have installed the database server as a service: check if the service is running via Task Manager. Go to the Services tab, and look for nxSPServer2 to check. If it is not running, you can start the service via a right-mouse click.

Next, all SimaPro multi-user clients have to be updated to SimaPro 10.5. This is explained in the next section.

### 2.2 Procedure for updating single-user and multi-user client



#### Accessing SimaPro desktop using Integrated Login

With this release, SimaPro uses Integrated Login to securely verify your access before opening the software. Please refer to these [instructions](#) on how to set it up and complete the login process. Once the authentication has been completed, you can continue working as usual in SimaPro. Please note that you will need internet connection for daily authentication. If SimaPro is used in an offline or restricted environment, we recommend reviewing this requirement before updating.

This procedure does not apply to SimaPro Faculty and Classroom license holders.

The procedure for updating the single-user and multi-user SimaPro client software is as follows:

1. Download the SimaPro installation file [SetupSimaPro1050.exe](#) to each computer that runs the SimaPro single-user or SimaPro multi-user client.
2. **Important:** Right-click **SetupSimaPro1050.exe** and select "Run as administrator" to start the installation. Please make sure all SimaPro instances are closed. Follow the instructions in the setup wizard. You may be asked for your SimaPro registration name and code. The current SimaPro software will be uninstalled and then replaced with SimaPro 10.5. Note that your database(s) will **not** be uninstalled!

Once you see the software is updated to version 10.5, you have finished the update procedure.

## 3 Contact us

Please contact us or your [local partner](#) if you have questions about new features in the SimaPro software or database, or if you have any other questions related to the update.

- In SimaPro: Help > Contact SimaPro Support (**recommended**)
- E-mail: [support@simapro.com](mailto:support@simapro.com)