

# SimaPro desktop 10.5

Full update instructions

**Title:** SimaPro desktop 10.5 | Full update instructions

**Written by:** Michiel Oele, Ruba Dolfing, Veronica Grace, SimaPro B.V.

**Version:** 1.0

**Date:** July 2026

**Copyright:** © 2026 SimaPro B.V. All rights reserved.

SimaPro grants the right to distribute and print the unchanged PDF version of this manual for non-commercial purposes only.

Parts of the manual may be reproduced in other work only after permission and if a clear reference is made that SimaPro is the author.

---

## About SimaPro

SimaPro is life cycle assessment software that helps organizations measure and analyze the environmental impacts of products across their entire life cycle. Built on extensive datasets and established scientific methods, the software provides transparent insights that support product development, sustainability strategy, and environmental reporting.

Used by industry and academia in more than 90 countries, SimaPro enables advanced modeling and scalable environmental impact calculations across teams. With more than 35 years of development behind it, SimaPro is widely trusted in the global LCA community. SimaPro is part of the One Click LCA group.

### Contact us

[support@simapro.com](mailto:support@simapro.com)

[simapro.com](https://simapro.com) | [support.simapro.com](https://support.simapro.com)

# Table of contents

<b>1</b>	<b>Introduction .....</b>	<b>4</b>
1.1	What to expect after an update	4
<b>2</b>	<b>Updating the SimaPro software.....</b>	<b>6</b>
2.1	Updating the SimaPro database server (multi-user versions only)	6
2.2	Procedure for updating single-user and multi-user client	6
<b>3</b>	<b>Updating the database .....</b>	<b>7</b>
3.1	Overview	7
3.2	Installing the full update database	8
3.3	Importing the full update database	9
3.4	Appending substances	14
3.5	Updating links in your projects to ecoinvent 3.12	15
3.5.1	Updating links from ecoinvent 2.2 to ecoinvent 3.12	15
3.5.2	Updating obsolete links in your projects to ecoinvent 3.12	15
<b>4</b>	<b>Contact us.....</b>	<b>19</b>

# 1 Introduction

This document describes how to accumulatively update your current software and database to the latest version, without having to go through the intermediate updates. In the [What's new in SimaPro 10.5](#) manual, you will find further information about changes in the data, methods, and software.

The update procedure can be summarized as follows:

1. **Software update:** Update your SimaPro single-user or multi-user client software to SimaPro desktop (formerly SimaPro Craft) 10.5. For multi-user licenses, you also need to update the SimaPro database server.
2. **Database update:** Import the updated database which includes the new and updated data and methods. This part can take quite some time, depending on the size of your database.

Please read on for detailed instructions. Should you still have questions, please contact your local [SimaPro partner](#) or SimaPro Support by email at [support@simapro.com](mailto:support@simapro.com).

## Update video instructions

The generic SimaPro update procedure for single-user and multi-user installations is also explained in a short video series that you can find on this [page](#). For version specific instructions, please still check the manual.

## 1.1 What to expect after an update

In SimaPro, the software is separated from the database. Thus a SimaPro update consists of **1) updating the software components** and **2) updating the database contents** with additional steps like appending substance and replacement of processes. Only after you have done both will you have completed the update.

Please note that every update is unique and may contain special instructions for that particular update, so please make sure to go through the update instructions carefully.

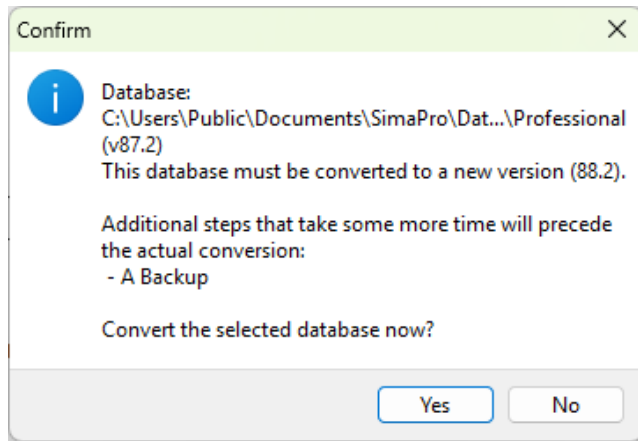
The frequently asked questions below provide a better understanding of what to expect after an update:

- **What if I only update the software?**

When you only do a software update you essentially get a newer software version that contains new software features and less bugs. Again, it is important to realize that a software update does not change any library, project data or methods in your database.

With an update to SimaPro 10.5, there are changes in the database technical format. After you update the software, you will need to do database technical conversion when you first open it in SimaPro 10.5, followed by performing a backup. This allows you to open your SimaPro database with SimaPro 10.5 software. After that, you cannot open this database with the previous SimaPro version anymore, but a backup is made available.

**Note:** your database contents will remain unchanged despite this technical conversion.



- **After I update the database, what happens to my data?**

Below is an overview of how your data *may* change – but please keep in mind this depends on whether the libraries and methods you are using have been updated in that specific release. With the changes

- **Library processes:** in most cases\*, library processes will be automatically updated. So, for example, an ecoinvent process from version 3.11 will be replaced by an updated version from ecoinvent 3.12.
- **Custom processes:** links to library processes will (in most cases\*) be automatically updated to link to the newer version of the dataset. The rest remains unchanged.
- **Default impact assessment methods:** the default impact assessment methods originally provided by SimaPro will be automatically updated (replaced) by the newer version – given that you did not change the name of the method.
- **Custom impact assessment methods:** these will remain unchanged.
- **Substances:** appending may merge one or more synonyms to one substance name and could change the result if the “final” substance is included in an impact assessment method and the previous was not.
- **For multi-user:** the users and user profiles defined on your database will remain intact

*\*Sometimes there are processes that become obsolete and are not automatically updated. These need additional handling by the user. Refer to [section 4.5](#) for further explanation.*

- **After a software update, can I expect my results to change?**

No, as you have not (yet) updated the database.

- **After a database update, can I expect my results to change?**

Most probably yes – that could be due to the changes in the library data or changes to the impact assessment method(s) used.

## 2 Updating the SimaPro software

### 2.1 Updating the SimaPro database server (multi-user versions only)

#### Single user vs. multiuser

If you are working with a single user SimaPro license please start with [section 3.2](#). Updating the database server is only relevant for multi-user licenses.

We recommend that multi-user updates are done by your network administrator. Please begin by updating the SimaPro database server. It is important to note that the defined Aliases remain intact after the update. To update the SimaPro database server:

1. Download the server installation file [SetupServer1050.exe](#) to the machine running the SimaPro database server.
2. **Important:** right-click **SetupServer1050.exe** and select *Run as administrator* to start the installation.
3. Follow the instructions in the setup wizard. You may be asked for your SimaPro registration name and code. The current SimaPro database server software will be uninstalled and then replaced with the latest software. Note that your database(s) will **not** be uninstalled!
4. If you have installed the database server as a service: check if the service is running via Task manager. Go to the "Services" tab, and look for nxSPServer2 to check. If it is not running, you can start the service via a right mouse click.

Next, all SimaPro multi-user clients have to be updated to SimaPro 10.5. This is explained in the next section.

### 2.2 Procedure for updating single-user and multi-user client

#### Database technical conversion

Please note that when you carry out SimaPro software update to 10.5, a database technical conversion will take place. After this, your database can no longer be opened with the previous SimaPro version. Nonetheless, a backup will be made during the conversion. The backup has the extension of .SPBackup and the default location is C:\Users\[Your Windows User Name]\Documents\SimaPro\Backup.



#### Accessing SimaPro desktop using Integrated Login

Starting with this release, SimaPro uses Integrated Login to securely verify your access before opening the software. Please refer to these [instructions](#) on how to set it up and complete the login

process. Once the authentication has been completed, you can continue working as usual in SimaPro. Please note that you will need internet connection for daily authentication. If SimaPro is used in an offline or restricted environment, we recommend reviewing this requirement before updating.

Note that this procedure does not apply to SimaPro Faculty and Classroom license holders.

The procedure for updating the single-user and multi-user SimaPro client software is as follows:

1. Download the SimaPro installation file [SetupSimaPro1050.exe](#) to each computer that runs the SimaPro single-user or SimaPro multi-user client.
2. Double-click **SetupSimaPro1050.exe** to start the installation. Follow the instructions in the setup wizard. Please make sure all SimaPro instances are closed. You may be asked for your SimaPro registration name and code. The current SimaPro software will be uninstalled and then replaced with SimaPro 10.5. Note that your database(s) will **not** be uninstalled!
3. Next, proceed with the database update procedure as described in section 4.

## 3 Updating the database

### 3.1 Overview



#### BEFORE YOU START

Updating/importing a SimaPro database can take some time, depending on the size of your database as well as your computer specs. Please be patient throughout the process even when SimaPro appears to be unresponsive, as aborting or cancelling the procedure can lead to database corruption.

This chapter describes how to update your database. The update process consists of four parts:

1. Installing the Full Update database that contains the new data.
2. Importing the Full Update database into your SimaPro database(s).
3. Doing an append action to merge synonyms in the substance list.
4. (Optional) Updating links in your projects to the most recent data libraries, or replacing links to obsolete processes.

These steps are described in detail in the following sections. In Box 1 and 2 you will find tips for updating multi-user licenses and an overview of the default database locations. You have to follow the database update procedure for each SimaPro database that you want to update.

### Updating SimaPro Classroom

Owners of an educational Classroom license do not have "None (single-user access)" database access but should request a temporary single-user license via [support@simapro.com](mailto:support@simapro.com) to do the update locally. We will include further instructions on how to update.

#### Box 1. Updating a database in a multi-user environment (not applicable for SimaPro Classroom)

In a multi-user environment, updating a database directly on the database server is very slow due to additional network traffic. If you have one of the professional multi-user licenses, you need to do the database update locally on a (fast) PC with the SimaPro client installed. This is much quicker.

To do that, log in as Manager and check under Tools > User Management that no users are logged into the SimaPro database. If so, you can close SimaPro. Locate the database that you want to update on the server's hard drive (see Box 2 for default locations) and copy these database (a set of 77 numbered \*.NX1 files) to your local hard drive. Do this also to the FullUpdate database if you install it on the server. In the "Open SimaPro Database" window, choose "None (single-user access)" and browse to the directory you copied the database to. You may be prompted to enter a password when opening the database so please enter the Manager password to proceed. Continue with the update instructions in [section 4.2](#). After updating, copy the updated database back to its original location on the server.

#### Box 2. Default directories

SimaPro installs updates in the default database directory if no other location is chosen. The default directory for Windows 10 and the supported Windows Server (based on the [system requirements](#)) is:

C:\Users\Public\Public Documents\SimaPro\Database

Some third-party databases will be installed in a subfolder of the default directory.

If you have a multi-user version and cannot find the database in one of the default directories, open the SimaPro database server. In the list of aliases, you can see the location(s) of the database directories that are being used. If you still cannot see the database(s) you expect, please ask your IT department to check if an alias for the location is defined in the SimaPro database server.

## 3.2 Installing the full update database

Download the file [SetupFullUpdateDatabase1050.exe](#) and double-click the file to install the "FullUpdate1050" database. Make sure SimaPro is closed otherwise you will receive a warning message. You have to do this on each computer with SimaPro single user installed (you may also copy the files). For the multi-user, one installation is sufficient.

The "FullUpdate1050" database will be installed in the default directory (see Box 2 above). Follow the instructions in the setup wizard. This process will only install the updated database on your computer, but it will **not yet** update the active databases. Please still follow the instructions on the next section.

**Multi-user version:** since we do not recommend doing the database update via the server, the FullUpdate database does not have to be installed in one of the locations (directory aliases) defined in the SimaPro database server. Instead, you can do the update on a local hard drive and then copy your updated database back to the server (see Box 1).

#### Database management tips

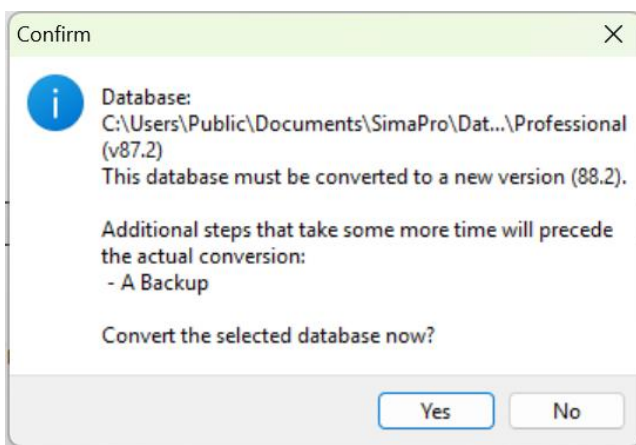
If you notice any older database updates (named FullUpdate960, FullUpdate1010, or similar), you can delete these with Windows Explorer to free up disk space and avoid confusion. To avoid deleting useful databases by accident, please open each database before deleting it to check for any projects that need to be kept.

### 3.3 Importing the full update database

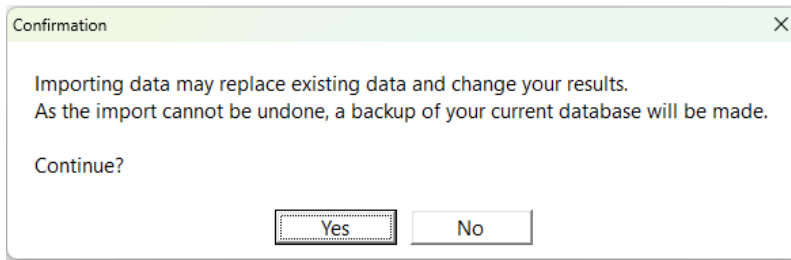
Follow these steps to import the new data:

1. Start SimaPro. If you have a multi-user SimaPro license, first, copy the database you want to update to a local path (make sure no other users are logged in at this moment and during the update process). Then open the database via "None (single-user access)" (see Box 1 above for further details).
2. Check if the database you want to update is open in SimaPro. The database name is found in the top left of the SimaPro window. If the database is not yet opened, go to File > Open SimaPro Database and select the database you want to update (the database you usually work in, for example, the Professional database).
3. When opening the database the first time in SimaPro 10.5, a technical conversion will take place. Click "Yes" to proceed. After this conversion, you cannot open the database with older versions of SimaPro. However, a backup will be made during this process.

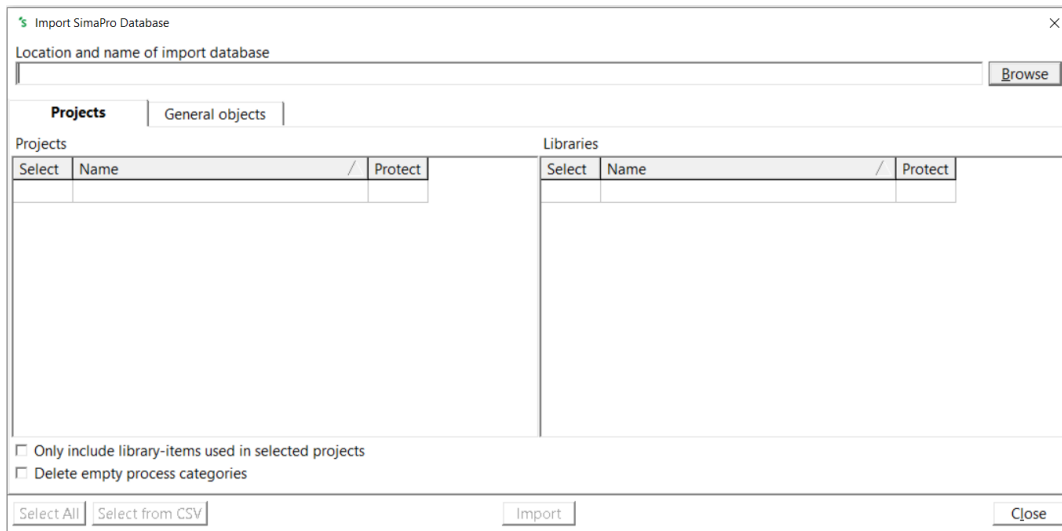
**Note:** the backup and conversion can take some time depending on the size of the database. Please wait patiently.



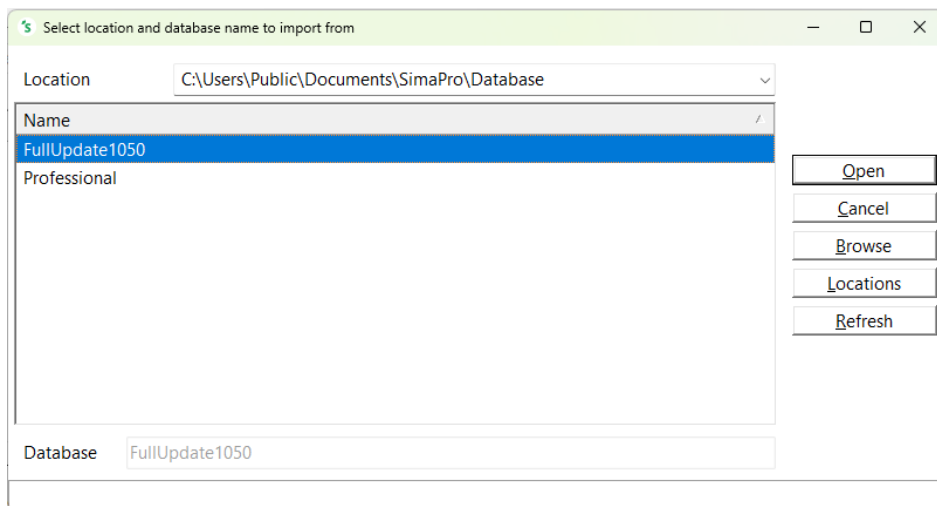
4. Go to File > Import SimaPro Database. Click *Yes* to continue when the message below appears.



5. The "Import SimaPro Database" dialogue box will appear:



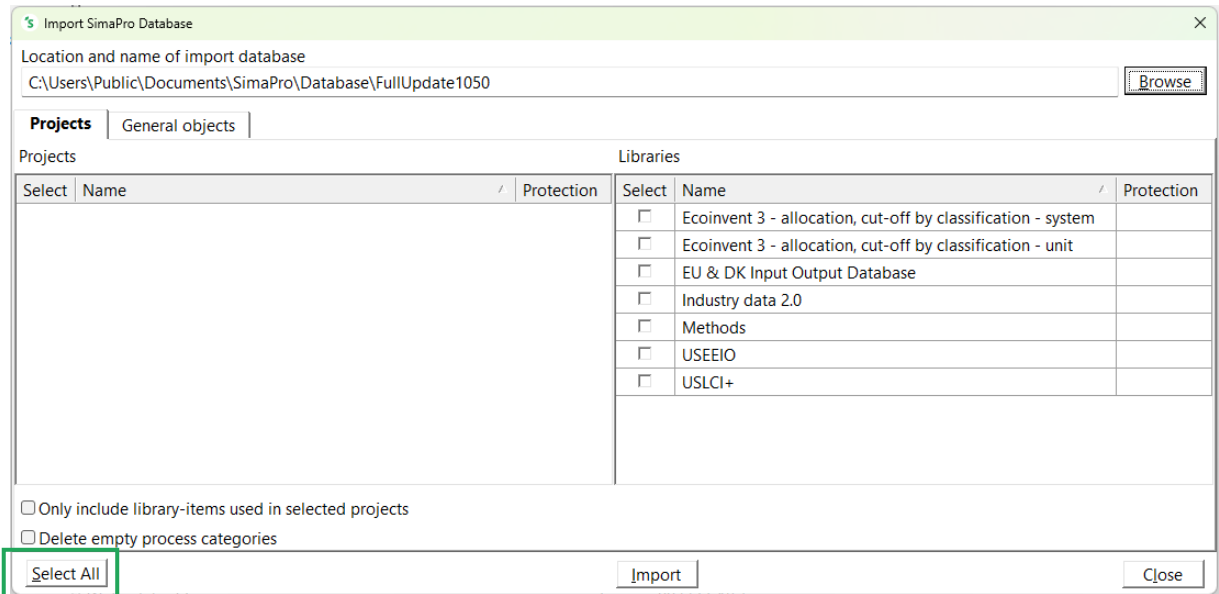
6. Click "Browse". The update database (FullUpdate1050) will appear in the "Open Database" dialogue box. In multi-user versions, the field "Server" is also shown. Choose "None (single-user access)" to perform the update locally (see step 1 and Box 1).



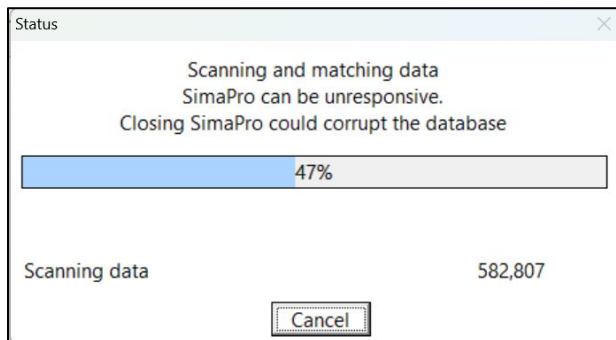
If you do not see the "FullUpdate1050" database, click the "Browse" button in the Open database window. By default, the "FullUpdate1050" database will be installed in the default directory (see Box 2 above). Otherwise, browse to the directory where you installed the update database. Then

select the "FullUpdate105001.nx1" file and click "Open". If you encounter "**Cannot read user info**" when trying to open the "FullUpdate1050" database, please refer to this [article](#) to solve it.

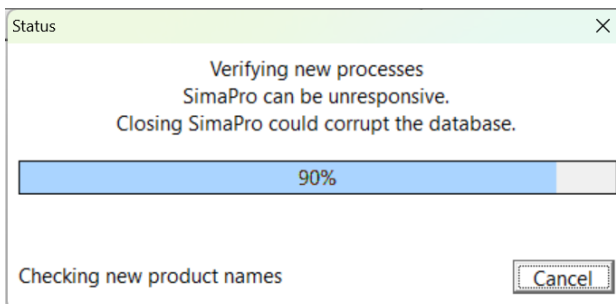
- You will see the libraries that need to be imported. Select those that you want to import. Next, click "Import". Alternatively, click "Select all" at the bottom left of the window.



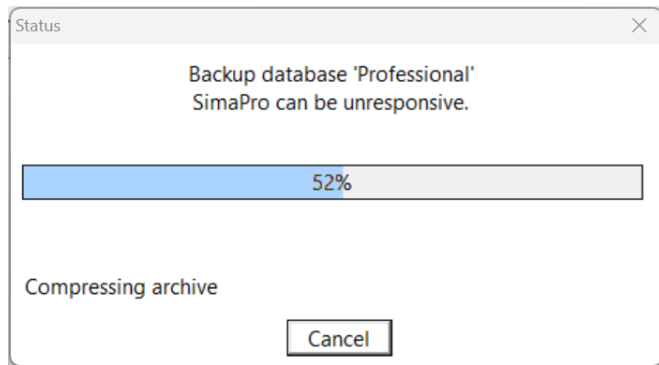
- The data will be scanned and an overview will be generated of all the data that are added or replaced. Depending on the amount of libraries that will be imported, this process can take quite some time. Once the scan is done, we recommend that you save this overview for your perusal.



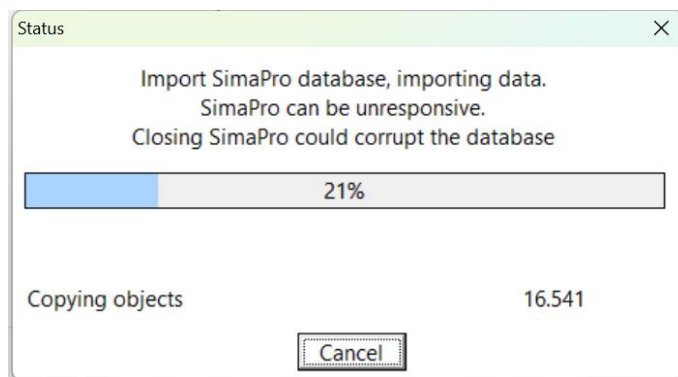
- Click "OK" and SimaPro will verify the new processes to be imported



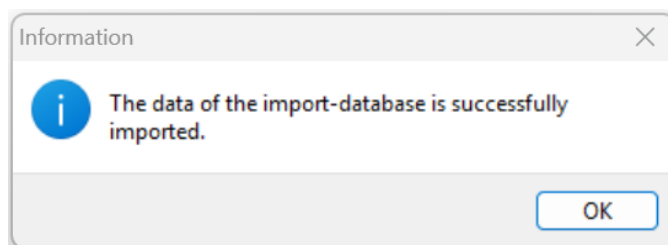
10. Before data importing starts, the program will prompt you to make a backup. Select the folder and file name of your backup file. The default location of the SimaPro backup is C:\Users\[Your Windows User Name]\Documents\SimaPro\Backup). The backup file name contains timestamp and has the extension of .SPBackup. Once you click "Save", SimaPro will start creating a backup of your database. **Note:** this can take some time, depending on the size of your database. If you click Cancel, the update procedure will be stopped.



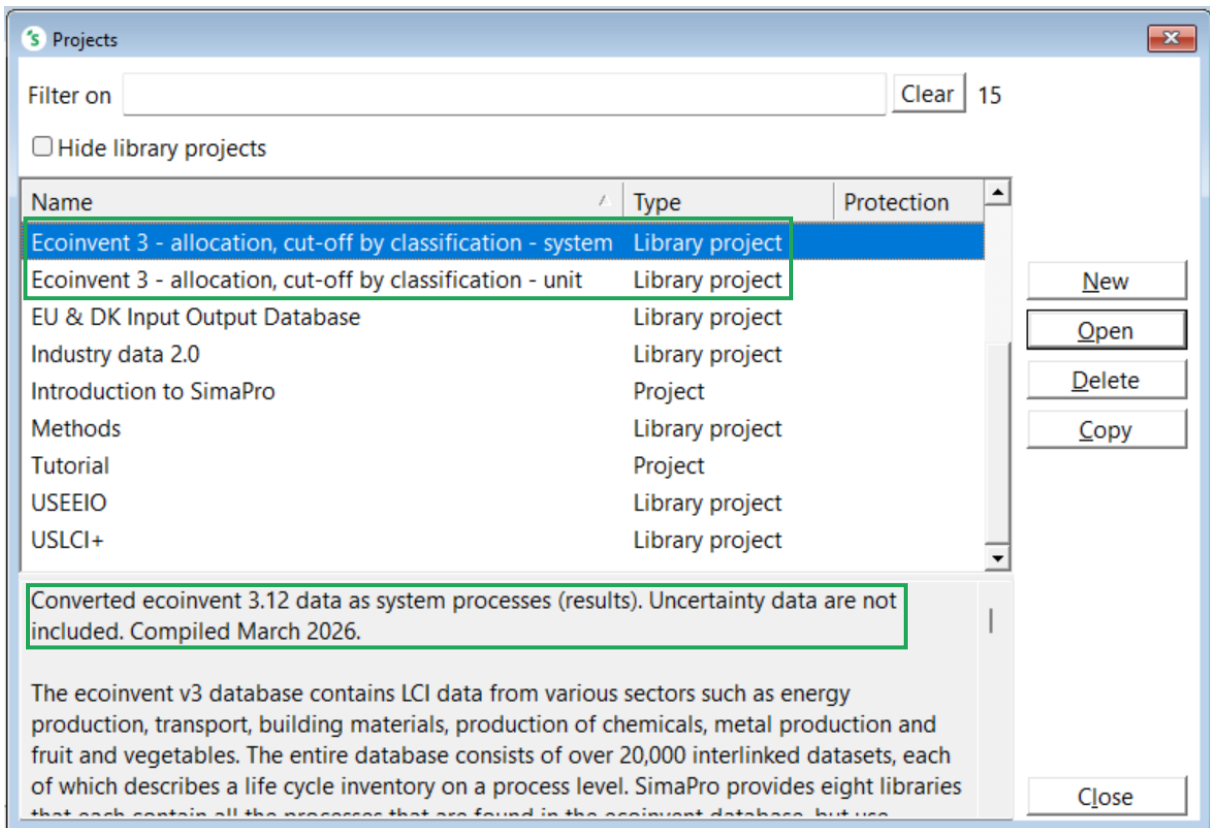
11. The data in the FullUpdate1050 database will now be imported into the existing database. **Note:** this step can take some time (depending on the size of the database). SimaPro may seem unresponsive even when the update appears to be finished so please be patient as forcing SimaPro to shut down may risk database damage. For users with multi-user license, see the update tips in Box 1 (section 4.1) to speed up the update process.



12. After the import is successfully completed, the below window will be shown



Your data libraries and methods should then be updated. As a quick check: you should now have ecoinvent 3.12 in your projects list (make sure to first uncheck "Hide library projects").



### Not all ecoinvent libraries will be updated after import

With this SimaPro release, only the ecoinvent 3 – allocation, cut-off by classification (unit and system) libraries are provided by default in the Professional and FullUpdate1050 databases. This is to deter users from using different models within a project, and to improve data management/updates in general.

As such, after updating your database, the ecoinvent 3 – allocation, cut-off by classification data library will show version 3.12 while other ecoinvent libraries (APOS and Consequential) will remain unchanged (so their version number may show as 3.10 or earlier).

If you wish to update those additional libraries as well, the latest version is available from this [webpage](#) and then you can import them in your updated database following the same instructions as explained in this manual.

### Box 3. Import errors

Should SimaPro report any import errors, please save the log file and take screenshots if possible. The overview of issues in the log file may help you to find out what went wrong. For assistance, please send an email to SimaPro support at [support@simapro.com](mailto:support@simapro.com) and include the log file and any screenshots as attachments.

We appreciate it if you could include the results of the database check, which can be done via File > SimaPro Database Management > Check Database.

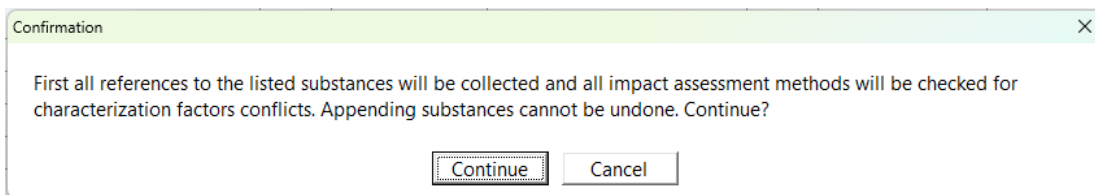
### 3.4 Appending substances

The next step is to do an “append substances” action to convert some old substance names in your database to the latest substance naming convention in SimaPro. If you do not do this, mismatches between life cycle inventory and impact assessment data may occur, leading to incorrect LCA results. The replacements are defined in the append file that is installed with the SimaPro software update.

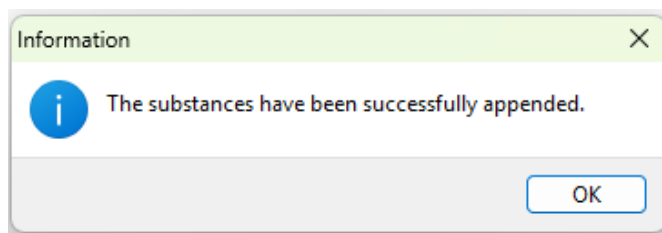
Appending merges two synonymous substance names into one. For example, CO<sub>2</sub> needs to be appended to Carbon dioxide, the latter being the name used in the most recent version of SimaPro and in the impact assessment methods. Without appending CO<sub>2</sub> to Carbon dioxide, any use of the substance named CO<sub>2</sub> in processes will not show in the impact assessment results.

To perform the Append:

1. Go to the “Substances” section under General Data in the LCA Explorer screen.
2. Click “Append”. A new window will open.
3. Click “Load” on the right-hand side and select the append file: AppendSubstances1050.xlsx. The append file can be found in the default database directory C:\Users\Public\Public Documents\SimaPro\Database. **Note:** If no data are loaded, your database is up to date!
4. Click “Append” on the right-hand side of the window.
5. On the following prompt, click “Continue”.



6. After a final confirmation and an option to make a backup file, the substances will be appended. Depending on the size of your database, this may take some time.
7. Once you see the following window, the Append process has been done successfully



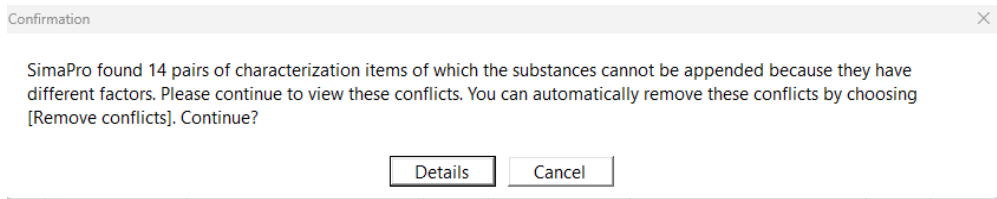
#### Prompts on Append

We strongly recommend you to run Append whenever you import data libraries. When running append, it is possible that you may see different prompts, such as:

##### 1. The selected append file doesn't contain any data that can be processed for this database

This warning means that there are no new substances to be appended. Your data is already up to date and you are good to go. You can simply press “OK”.

## 2. Conflicts on Append



If you receive conflicts upon appending substances like the above window, it implies that there are two synonymous substances that are both used in a single impact category but with different characterization factors. When this happens, SimaPro offers to use the factors of the target substances. You can safely remove these conflicts by clicking Details > Remove conflicts and make sure to store the conflicts. After that, the append will proceed.

## 3.5 Updating links in your projects to ecoinvent 3.12

### 3.5.1 Updating links from ecoinvent 2.2 to ecoinvent 3.12

When carrying out the full update, if the ecoinvent 2.2 data library was available in your database, it will remain alongside the new ecoinvent 3.12 library. Furthermore, any links in your projects to ecoinvent 2.2 will remain intact.

If you wish to change those links from ecoinvent 2.2 to the most recent equivalent version in ecoinvent 3.12 (where possible), you can use the Projects to Libraries Links manager to replace the links manually (please refer to [section 4.5.2](#)).

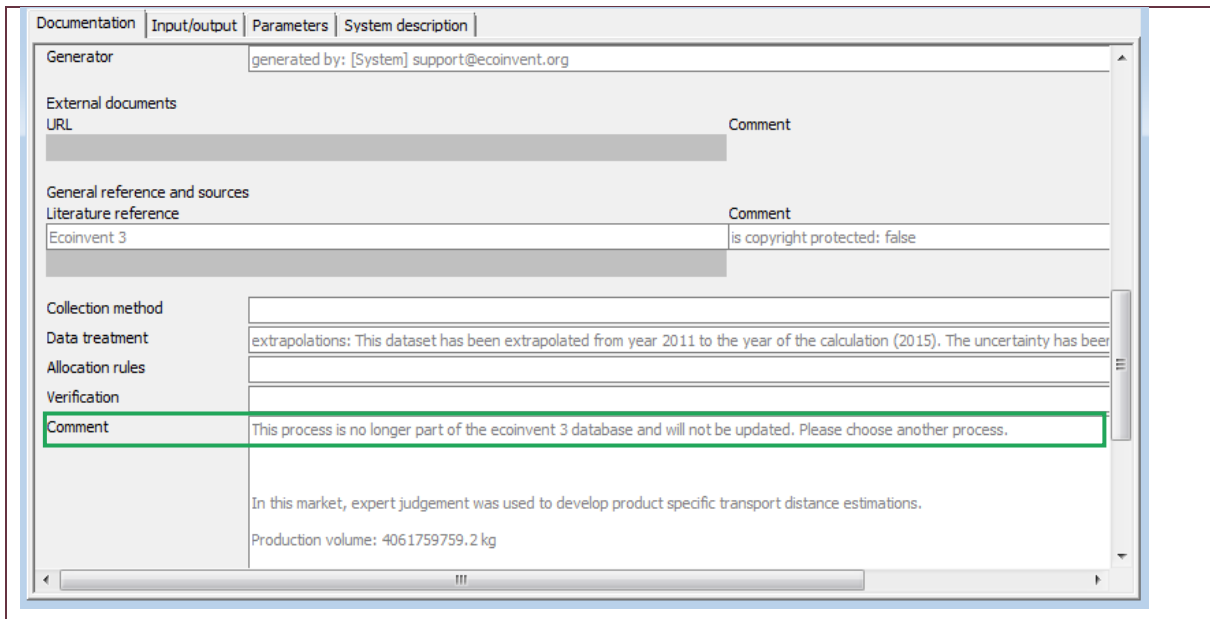
### 3.5.2 Updating obsolete links in your projects to ecoinvent 3.12

Since ecoinvent 3.1 to 3.11 will be replaced by the updated 3.12 library, the majority of links will be updated automatically to ecoinvent 3.12. However, a number of processes are no longer supported and are considered obsolete.

#### How can I tell which processes are now obsolete?

The quickest way to review the obsolete processes is by checking the 'Obsolete' sub-categories in the ecoinvent 3.12 processes for material, energy, transport, etc. (Inventory > Processes > Material > Others > Obsolete). In the Documentation tab of these processes, the Comment field states that the correspondence process is no longer part of the ecoinvent 3 database (see screenshot below). If you select any of those processes and click on 'Used by', you will get an overview of the projects which are using the selected obsolete process.

In addition, if you calculate a process or product stage that is or contains an obsolete process, you will get a warning message. The warning message indicates which process(es) are obsolete. You can then replace them using the replacement files (if possible) or manually.



Considering that you may have used some of these obsolete processes in your projects, we have created a special replacement file to allow you to change most of these obsolete links from older ecoinvent 3 versions to the correct processes in ecoinvent 3.12 in a fast and easy way. With this update, the following replacements file is available: **Replace EI 3.x to 3.12 Cut off library.xlsx**. The replacement file can be found in the default database directory: C:\Users\Public\Public Documents\SimaPro\Database (see also Box 2 in section 4.1).

### Replacement files for APOS & Consequential

With this SimaPro release, only ecoinvent allocation, cut-off by classification is included by default in the SimaPro database (Professional, Update1050, FullUpdate1050). If you wish to also replace obsolete links for ecoinvent APOS & consequential, you can download the database separately from this [webpage](#). The replacement files are then included in the installer.

Please note that using the replacement files **does not** replace all obsolete processes. Some processes are disaggregated into more specific products or regions. In these specific cases, users should assume and decide themselves which activity is the best replacement. SimaPro will generate a warning when you make a calculation and finds that an obsolete process is still being used in your model. In that case, you need to manually replace the process with a process that is more suitable. See section [4.5.2.2](#) for further instructions on how to do manual replacement.

### Obsolete processes not included in the replacement files

Please review the [spreadsheet](#) to check the reason why the activity from the previous version of ecoinvent does not exist in ecoinvent 3.12 anymore.

### 4.5.2.1 Using the replacement files

Follow the next steps for replacing the obsolete links in your project using one of the replacement files. You can also refer to [this video](#) for general instructions on using the tool: Projects to Libraries Links Manager.

1. Open a project in your updated database. This can be any project.
2. Go to Tools > Projects to Libraries Links Manager.
3. Select the project(s) of which you want to change links (or press Ctrl+A to select all projects and another press of CTRL+A to deselect). You can use the filter to select project(s) by (part of the) name.
4. Select theecoinvent libraries where you want to replace the links.

**Note: make sure that these ecoinvent libraries are also selected under the Goal and Scope > Libraries section in SimaPro.**

5. Click "Scan".
6. View the links found by clicking on the tab "Links".
7. Click on the "Import replacements" button.
8. Select the appropriate replacement file which can be found in the database directory (see Box 2 in [section 4.1](#)) and click "Open".
9. Check the links which are going to be replaced in the column "Replace name".

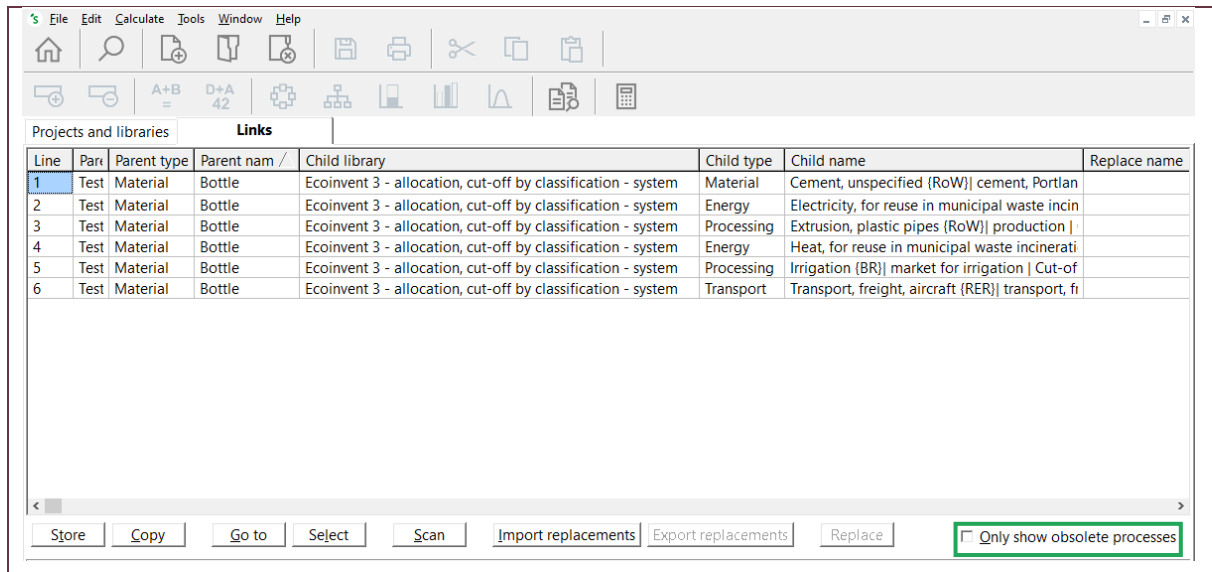
**Note: It is possible that there are no replacements found. This means that the projects you selected do not contain links that can be replaced using the replacement files. Nevertheless, there may still be some links that need to be replaced manually.**

10. Store your links in order to be able to check afterward. It is also possible to add new replacement links yourself.

Click "Replace" to replace the links to the chosen library. You will get a message on how many links are replaced to the chosen library.

#### Tips in updating obsolete links

It is recommended to **first use the replacement files to replace as many links as possible**. After that, if you receive a message while calculating in SimaPro that your model includes obsolete processes, you can replace those manually. Please refer to [section 4.5.2.1](#) and [section 4.5.2.2](#) below for further instructions. You can also filter only on obsolete processes by selecting "only show obsolete processes" menu on the bottom left of the window:



#### 4.5.2.2 Manual replacement (or creating your own replacement file)

Once you determine that your project(s) still contain obsolete links, you can replace these manually by selecting an alternative process in the relevant process or product stages records. You can also use the Projects to Libraries Links Manager to manually replace multiple links that were not replaced using replacement files (please also refer to [this video](#) for an example).

1. Go to Tools > Projects to Libraries Links Manager.
2. Select the ecoinvent libraries where you want to replace the links.
 

**Note: make sure that these ecoinvent libraries are also selected in the Goal and scope > Libraries section in SimaPro.**
3. Click "Scan".
4. View the links found by clicking on the tab Links. The column "Child name" shows the original links.
5. Double click any of the empty cells you want to replace under the column "Replace name".
6. A dialogue box will open in which you can choose an alternative link in the preferred library. Use the function "Show as list" on the right-hand side of the screen to list all links. Filter the links from the preferred library by entering the suffix of that library in the filter box at the bottom of your screen.
7. Choose the preferred link and click "Select".
8. You will get a message: 'Links referencing the same product. Use the selected replacement for them too?' These are the same links which are used in different projects or within projects. Choose "Yes" to replace all links. If you click "No" only the selected link will be replaced.
9. Click "Replace" to replace the links. If you want to replace all links at once and you did not finish the work, you can export the previously selected links to Excel and import them at a later stage by clicking "Export replacements" and saving your replacement file.

**You have now finished the update procedure! Repeat for any other database you wish to update.**

## 4 Contact us

Please contact us or your [local partner](#) if you have questions about new features in the SimaPro software or database, or if you have any other questions related to the update.

- In SimaPro: Help > Contact SimaPro Support (**recommended**)
- E-mail: [support@simapro.com](mailto:support@simapro.com)