

SimaPro multi-user

The basics

Contents



- Overview & technical requirements
- Installing SimaPro multi-user
- Creating and managing users
- Updating SimaPro multi-user

Overview & technical requirements

SímaPro

Why SimaPro multi-user?



- Great for collaboration – users can work together in the same database, same project at the same time!
- Various user roles and access levels can be defined.
- Ideally all users share 1 SimaPro database → less hassle updating
- Cheaper than purchasing multiple single user licenses
- Caveat: if you're used to using the single user installation of SimaPro, multi-user will feel slower when carrying out certain functions

SimaPro multi-user | The building blocks

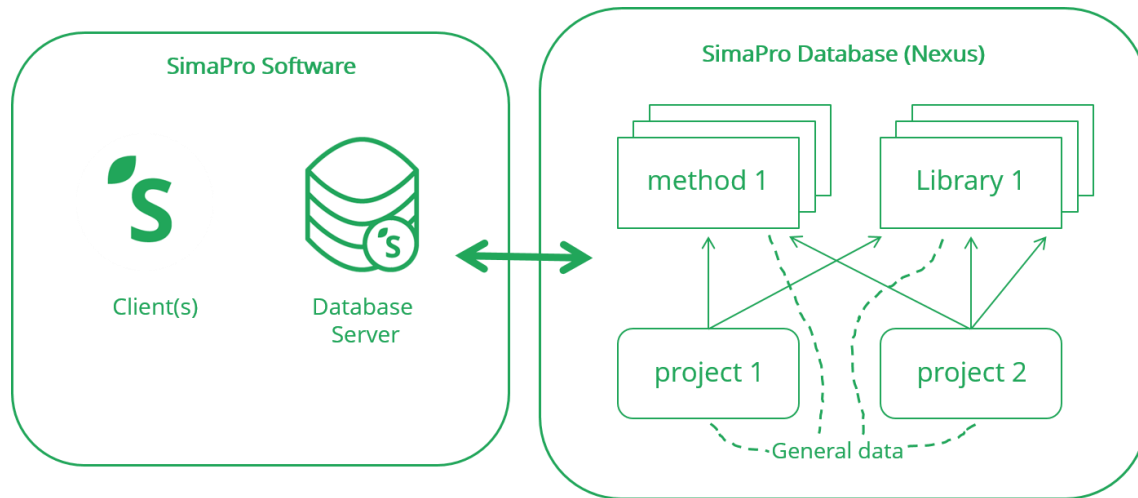


SimaPro software comprises of the client, in addition to the SimaPro database server.

For each multi-user setup, 1 SimaPro database server should be installed. One or more SimaPro clients can be installed that connect to the SimaPro database(s) via the SimaPro database server.

The SimaPro database server controls and organizes access to users and databases, also allowing them to work in a shared database.

The **SimaPro database** (by default called Professional) contains data libraries, impact assessment methods, user projects, in addition to general data like units and substances.

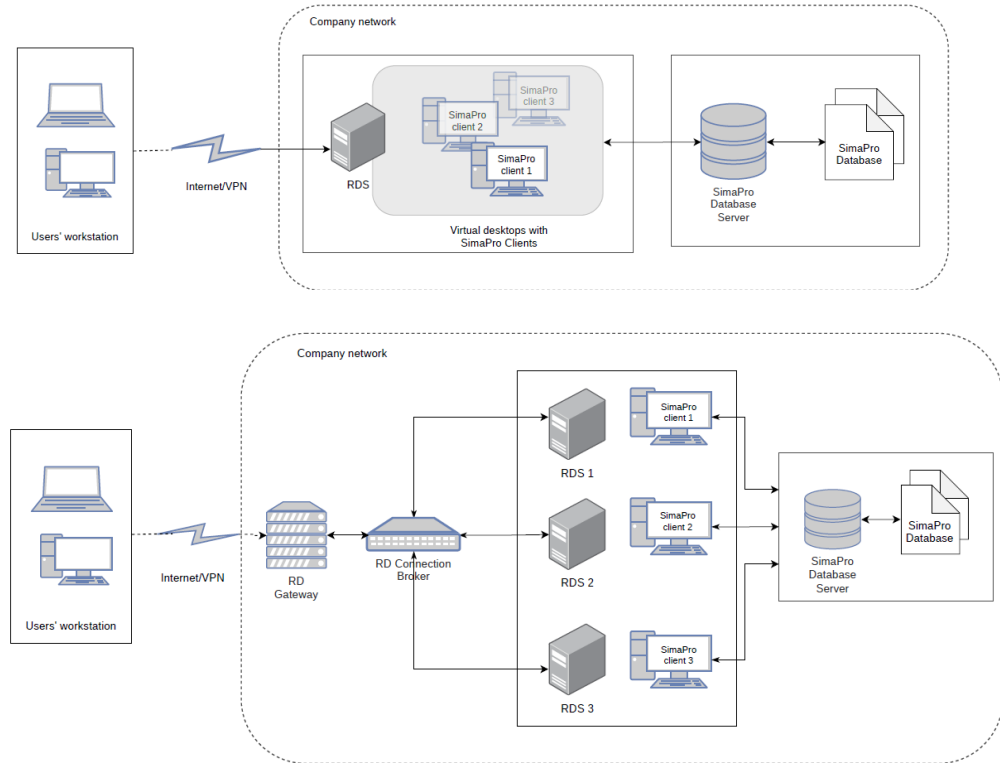


Recommended installation setup



- SimaPro client, database server, and database are all installed on the remote desktop server (RDS)
- It is also possible to have several installations of remote desktop server with the SimaPro client, all connecting to the same SimaPro database server
- Users then connect to the RDS environment via VPN

Please refer to the [installation manual](#) for step-by-step instructions



Technical requirements



- For **optimal performance**, the SimaPro client, SimaPro database server and Database should be installed **on the same (virtual) machine**.
- Ideal installation: all components are installed on a terminal/virtual server that can be accessed remotely by the users.
- Examples of setups & specs that work well with 5+ users working together at the same time:

	Example 1	Example 2	Example 3
Which tooling is used Citrix, VMware version x.y etc)	Windows server 2016 with Remote Desktop Role installed.	A single dedicated Azure hosted VM running Remote Desktop Server. SimaPro is published as an RemoteApp to end-users	Virtual server on VMware 7.0.3.
Specs of machine where the Database server is installed (OS, RAM, what type of disk drive)	16GB RAM, 2x CPU, 250GB disk (SSL-)VPN solution for safe access Office 2016 / O365	Not applicable	Microsoft Windows Server 2019 Standard, 12GB RAM, 471GB partition for system, 60GB partition for data
Specs of virtual desktop server, OS, how much RAM/diskspace in total and allocated per user.	Windows10 (Multisession) machine in Azure, 1x CPU with 4GB RAM and 20GB disk per user (SSL-)VPN solution for safe access Office 365	VM SKU: Standard D4s v3 (vCPUs4, RAM 16 Gb) Windows Server 2019-Datacenter	Same as above. No space allocated per user

- Minimum requirements: <https://support.simapro.com/articles/Article/SimaPro-System-Requirements>

Installing SimaPro multi-user

SimaPro

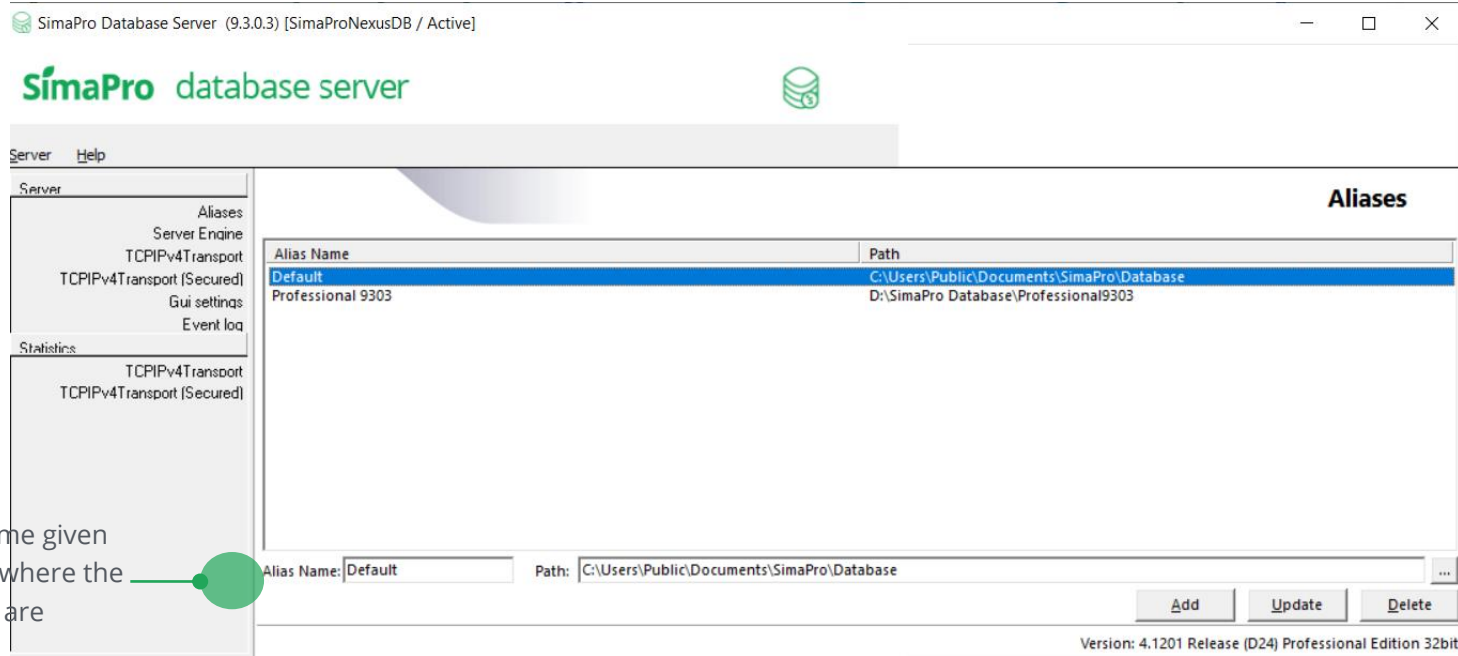
Installation | Start with the server



****Installation should be done by or with IT****

1. Install the SimaPro database server (SetupServerNNN.exe)
 - Run installer as admin (right-click>Run as administrator)!
 - You will be asked to enter your most recent SimaPro registration name and code
 - You can install as a standalone application or as a service (most users install as a service so that it is always running in the background)
 - No activation needed
 - Also installs the SimaPro database and creates a default Alias (see next slide)

Installation | Start with the server

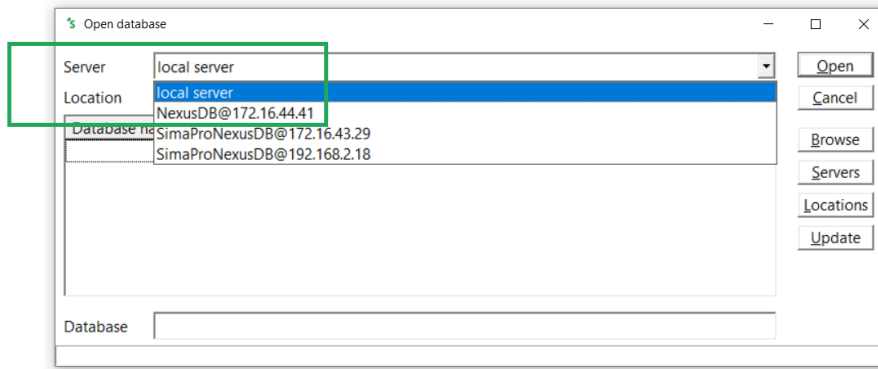


Installation | Continue with installing the client



2. Install the SimaPro client (SetupSimaproNNN.exe)

- Activation is needed for the client
- In the open database window, you have the server option
 - Local server → direct access to the database (if you select this option, only 1 user will be able to open the database)*
 - NexusDB@.... → access to the database via the database server (if you select this option, multiple users can open and work in the database at the same time)



**Not available in SimaPro Classroom*

Installation | Keep in mind



- Step-by-step instructions and further details (ex. about ports, firewalls, etc.,) can be found in the [installation manual](#).
- For **optimal performance**, the SimaPro client, SimaPro database server and Database should be installed on the same machine.
- If you access the SimaPro database via **local server** (i.e. direct access to the database not via the SimaPro database server), SimaPro behaves as a single user and no other users can access the database!
- If you only install the client no database is installed!
- [Silent install is possible](#) (useful for SimaPro classroom)

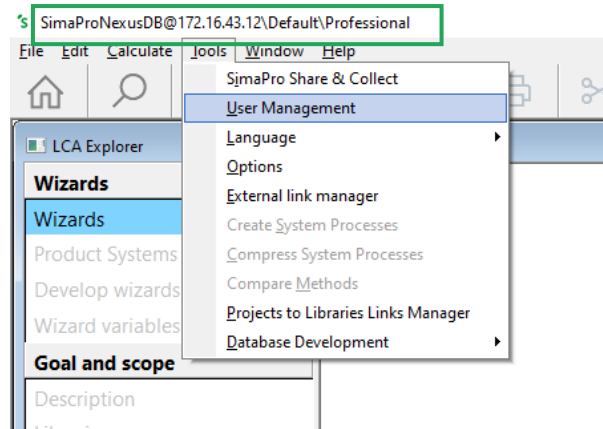
Creating & managing users

SímaPro

User management | Overview



- Organizations should appoint a SimaPro admin (Manager) internally
 - User management features are only available for Managers
 - Manager should access database via database server (not local server)
 - Managers can create and manage users, user types. They are the only ones that can import and export data, run a db check, etc.
- Users are defined on a database level (so can be different per database)
- Can only have 1 Manager per database
- During operations like database checks, import, export, no other users can be logged in (they will be kicked out if they are)



User management | Creating and managing users



- User types and users are defined on database level (so for every database they can be different). The default user types are
 - LCA expert
 - LCA practitioner
 - Visitor
- The default (pre-defined) users, which are based on the above-mentioned types are:
 - Expert
 - Manager
 - Practitioner
 - Visitor
- You can edit/delete all these default user types and users (except for Manager).
- You can create users & assign projects:
 - Manually
 - [Via an import Wizard](#)
 - [Via importing an Excel file](#)

User management | FAQs



- **What happens to the defined users if I import a database (for example during an update)?**
The users defined will remain.
- **What happens to the defined users if I export a project as a database?**
Depends on how you export:
 - Via local server: SimaPro behaves like a single user so the users will disappear, and you need the Manager password to open the exported database.
 - Via nexus: In the 'Export SimaPro Database' window (User objects tab), you can select which users and user types to include in the exported database.
- **What if the Manager password is lost/ forgotten?**
Contact SimaPro Support. We can clear the password if you send us file number 7 of the user's database (for example Professional07.nx1)
- **How can I 'kill' a user/ghost session?**
Manager should log in> go to list of sessions, select user and then Shift+Delete buttons

Updating SimaPro multi-user

SimaPro

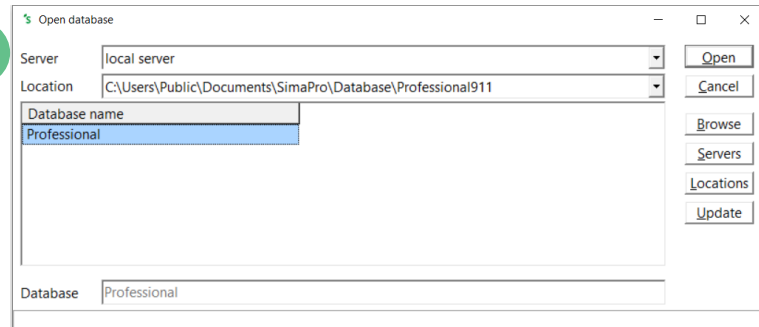
Overview of updating SimaPro multi-user



- First update the software components then update the database. As with installation, this should be carried out by/with your IT.
- The entire process can take 3-6 hours (database import is time consuming) during which users are **not able to use SimaPro** so internal coordination with the end-users is important.
- To speed up database import - software, working database, update database should be on same machine
- Start by opening the database you want to update via **local server** (special instructions for SimaPro Classroom users as they do not have this option!)
- Step-by-step instructions and further details can be found in the [update manuals](#).
- **Note:** if you do not wish to update your database but rather start with a fresh database that contains the latest data libraries and methods, please contact [SimaPro Support](#).

Not via database server
(NexusDB@123.456.789)

Keep in mind you may need
Manager password to open
database



Let's keep in touch



Newsletter:
bit.ly/LCAnews



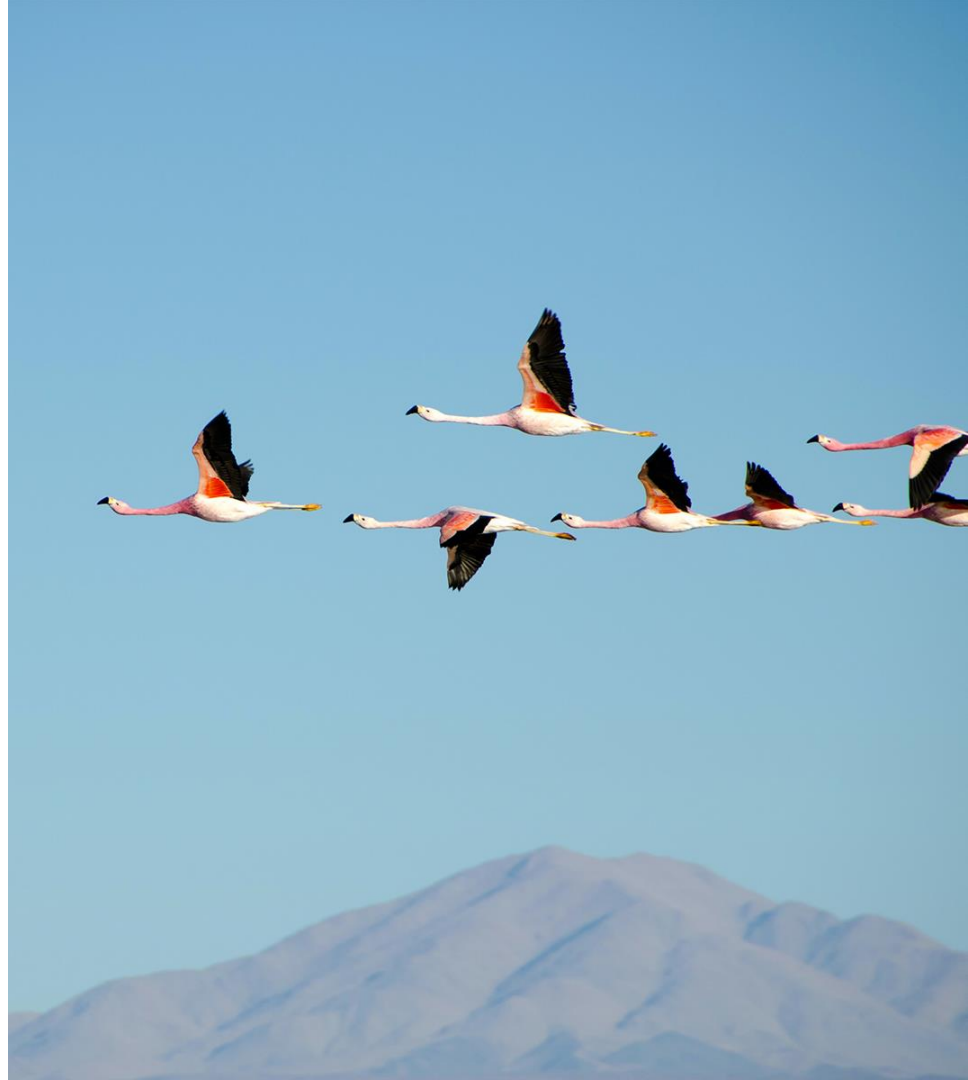
PRé Sustainability



SimaProUpdates



SimaPro



Thanks
Bedankt
Gracias
Terima kasih
ありがとう
Obrigado
谢谢
Tack
Grazie
شكرا

धन्यवाद
Dankie
Teşekkür ederim
감사합니다
Takk skal du ha
Vielen Dank
Merci
ขอบคุณ
Tak