

# SimaPro 9.6

Full update instructions

**Title:** SimaPro 9.6 | Full update instructions

**Written by:** Michiel Oele, Ruba Dolfing, Veronica Grace, PRé Sustainability

**Version:** 1.0

**Date:** April 2024

**Copyright:** © 2024 PRé Sustainability B.V. All rights reserved.

PRé grants the right to distribute and print the unchanged PDF version of this manual for non-commercial purposes only.

Parts of the manual may be reproduced in other work only after permission and if a clear reference is made that PRé is the author.

---

## About SimaPro

SimaPro was developed by PRé with the goal of making sustainability a fact-based endeavor. PRé has been a leading voice in sustainability metrics and life cycle thinking development for nearly 30 years, pioneering the field of environmental and social impact assessment. We develop tools that help you create value and drive sustainable change.



SimaPro is distributed through a Global Partner Network. All partners were carefully selected by PRé. A partner in your country will act as your local SimaPro sales and support representative and can show you a personal demo or provide more information.

Find your local partner: [simapro.com/global-partner-network](https://simapro.com/global-partner-network)

## Get in touch

T +31 33 450 40 10

E [support@simapro.com](mailto:support@simapro.com)

W [simapro.com](https://simapro.com) | [support.simapro.com](https://support.simapro.com) | [pre-sustainability.com](https://pre-sustainability.com)

# Table of contents

<b>1</b>	<b>Introduction .....</b>	<b>4</b>
1.1	What to expect after an update	4
<b>2</b>	<b>Perform database check if using SimaPro 8.....</b>	<b>6</b>
<b>3</b>	<b>Updating the SimaPro software.....</b>	<b>6</b>
3.1	Updating the SimaPro database server (multi-user versions only)	6
3.2	Procedure for updating single-user and multi-user client	7
<b>4</b>	<b>Updating the database .....</b>	<b>7</b>
4.1	Overview	7
4.2	Installing the full update database	9
4.3	Importing the full update database	9
4.4	Appending substances	14
4.5	Updating links in your projects to ecoinvent 3.10	15
4.5.1	Updating links from ecoinvent 2.2 to ecoinvent 3.10	15
4.5.2	Updating obsolete links to ecoinvent 3.10	15
<b>5</b>	<b>Contact us.....</b>	<b>19</b>

# 1 Introduction

This document describes how to accumulatively update your current software and database from SimaPro 8 or 9 to the latest release of SimaPro. In the [What's new in SimaPro 9.6](#) manual, you will find further information about changes in the data, methods, and software.

The update procedure can be summarized as follows:

1. **Software update:** Update your SimaPro single-user or multi-user client software to SimaPro 9.6. For multi-user licenses, you also need to update the SimaPro database server (see [section 3.1](#))
2. **Database update:** Import the updated database which includes the new and updated data and methods. This part can take at least a couple of hours – depending on the size of your database.

Please read on for detailed instructions. Should you still have questions, please contact your local [SimaPro partner](#) or SimaPro Support by email at [support@simapro.com](mailto:support@simapro.com).

## Update video instructions

The generic SimaPro update procedure for single-user and multi-user installations is also explained in a short video series that you can find on this [page](#). For version specific instructions, please still check the manual.

## 1.1 What to expect after an update

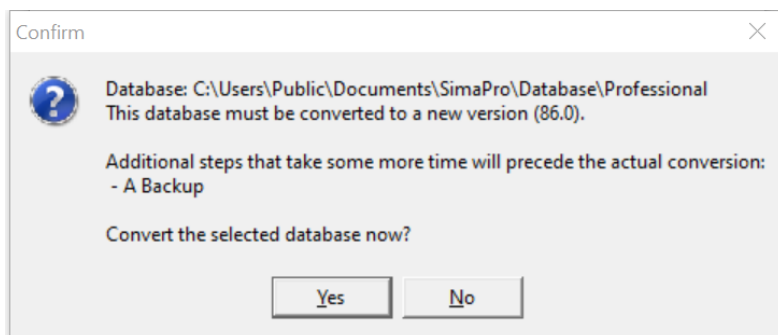
In SimaPro, the software is separated from the database. Thus a SimaPro update consists of an update of the software components, in addition to an update of the database contents with additional steps like appending substance and replacement of processes. Only after you have done both will you have completed the update.

Please note that every update is unique and may contain special instructions for that particular update, so please make sure to go through the update instructions carefully.

The frequently asked questions below provide a better understanding of what to expect after an update:

- **What if I only update the software?**

With an update to 9.6, there are changes in the database technical format. After you update the software, you will need to do technical conversion of the database when you first open it in SimaPro. This allows you to open your SimaPro 9.5 database with SimaPro 9.6 software. After that, you cannot open this database with 9.5 anymore but a backup is made available. Nonetheless, despite this technical conversion, your database contents remain unchanged.



With a software update you essentially you get a newer software version that contains new software features and less bugs. Again, it is important to realize that a software update does not change any library, project data, or methods in your database.

**Example:** You used to work with SimaPro 9.5 with ecoinvent 3.9.1. If you only do the software update, your software version will be updated to SimaPro 9.6, but you will still be working with ecoinvent 3.9.1 (and not ecoinvent 3.10).

- **After I update the database, what happens to my data?**

Below is an overview of how your data *may* change – but please keep in mind this depends on whether the libraries and methods you are using have been updated in that specific release.

- **Library processes:** in most cases\*, library processes will be automatically updated. So, for example, an ecoinvent process from version 3.9.1 will be replaced by an updated version from ecoinvent 3.10.
- **Custom processes:** links to library processes will (in most cases\*) be automatically updated to link to the newer version of the dataset. The rest remains unchanged.
- **Default impact assessment methods:** the default impact assessment methods originally provided by PRé will be automatically updated (replaced) by the newer version – given that you did not change the name of the method.
- **Custom impact assessment methods:** these will remain unchanged.
- **Substances:** appending may merge one or more synonyms to one substance name and could change the result if the “final” substance is included in an impact assessment method and the previous was not.
- **For multi-user:** the users and user profiles defined on your database will remain intact

*\*Sometimes there are processes that become obsolete and are not automatically updated. These need additional handling by the user. Refer to [section 4.5](#) for further explanation.*

- **After a software update, can I expect my results to change?**

No, as you have not (yet) updated the database.

- **After a database update, can I expect my results to change?**

Most probably yes – that could be due to the changes in the library data or changes to the impact assessment method(s) used.

## 2 Perform database check if using SimaPro 8

Before you update your software to SimaPro 9.6, we recommend that you first carry out a database check if you are still using SimaPro 8. This will avoid you from converting a potentially corrupt database to SimaPro 9 which can make it harder to repair. **You only need to do this step for the database(s) that you intend to update.**

To carry out a database check:

- Open the database: File > Open SimaPro Database.
- Choose File > Database management > Check. This check may take a while.
- If the check shows no errors, please proceed with [section 3](#). If the error shows errors that can be repaired automatically, please do so and then proceed with [section 3](#).
- If other errors are shown, with no possibility of repair, please select Store. This will save the error log as a .txt or .xls file. Send the file as an attachment to [support@simapro.com](mailto:support@simapro.com) and we will advise you on the next steps.

## 3 Updating the SimaPro software

### 3.1 Updating the SimaPro database server (multi-user versions only)

#### Single user vs. multiuser

If you are working with a single user SimaPro license please start with [section 3.2](#). Updating the database server is only relevant for multi-user licenses.

We recommend that multi-user updates are done by your network administrator. Please begin by updating the SimaPro database server. It is important to note that the defined Aliases remain intact after the update. To update the SimaPro database server:

1. Download the server installation file [SetupServer960.exe](#) to the machine running the SimaPro database server.
2. **Important:** right-click **SetupServer960.exe** and select *Run as administrator* to start the installation.
3. Follow the instructions in the setup wizard. You may be asked for your SimaPro registration name and code. The current SimaPro database server software will be uninstalled and then replaced with the latest software. Note that your database(s) will **not** be uninstalled!

4. If you have installed the database server as a service: check if the service is running via Task Manager. Go to the "Services" tab, and look for nxSPServer2 to check. If it is not running, you can start the service via a right mouse click.

Next, all SimaPro multi-user clients have to be updated to SimaPro 9.6. This is explained in the next section.

## 3.2 Procedure for updating single-user and multi-user client

### Database technical conversion

Please note that when you carry out SimaPro software update to 9.6, a database technical conversion will take place. After this, your database can no longer be opened with the previous version of SimaPro. Nonetheless, a backup will be made during the conversion. The backup has the extension of .SPBackup and the default location is C:\Users\[Your Windows User Name]\Documents\SimaPro\Backup.

The procedure for updating the single-user and multi-user SimaPro client software is as follows:

1. Download the SimaPro installation file [SetupSimaPro960.exe](#) to each computer that runs the SimaPro single-user or SimaPro multi-user client.
2. Important: Right-click **SetupSimaPro960.exe** and select "Run as administrator" to start the installation. Follow the instructions in the setup wizard. You may be asked for your SimaPro registration name and code. The current SimaPro software will be uninstalled and then replaced with SimaPro 9.6. Note that your database(s) will **not** be uninstalled!
3. Next, proceed with the database update procedure as described in [section 4](#).

# 4 Updating the database

## 4.1 Overview



### BEFORE YOU START

Updating/importing a SimaPro database can take 4-6 hours, depending on the size of your database as well as your computer specs. Please be patient throughout the process (**especially at 96% when SimaPro appears unresponsive**), as aborting or cancelling the procedure can lead to database corruption.

This chapter describes how to update your database. The update process consists of four parts:

1. Installing the Full Update database that contains the new data.
2. Importing the Full Update database into your SimaPro database(s).
3. Doing an append action to merge synonyms in the substance list.
4. (Optional) Updating links in your projects to the most recent data libraries, or replacing links to obsolete processes.

These steps are described in detail in the following sections. In Box 1 and 2 you will find tips for updating multi-user licenses and an overview of the default database locations. You have to follow the database update procedure for each SimaPro database that you want to update.

### Updating SimaPro Classroom

Owners of an educational Classroom license do not have “local server” database access but should request a temporary single-user license via [support@simapro.com](mailto:support@simapro.com) to do the update locally. We will include further instructions on how to update.

### Box 1. Updating a database in a multi-user environment (not applicable for SimaPro Classroom)

In a multi-user environment, updating a database directly on the database server is very slow due to additional network traffic. If you have one of the professional multi-user licenses, you need to do the database update locally on a (fast) PC with the SimaPro client installed. This is much quicker.

To do that, log in as Manager and check under Tools > User Management that no users are logged into the SimaPro database. If so, you can close SimaPro. Then locate the database that you want to update on the server’s hard drive (see Box 2 for default locations) and copy these database (a set of 77 numbered \*.NX1 files) to your local hard drive. In the “Open SimaPro Database” window, choose “Local server” and browse to the directory you copied the database to. You may be prompted to enter a password when opening the database so please enter the Manager password to proceed. After that, continue with the update instructions in [section 4.3](#). After updating, copy the updated database back to its original location on the server.

### Box 2. Default directories

SimaPro installs updates in the default database directory if no other location is chosen. The default directory for Windows 10, Windows Server 2012, Windows Server 2016, Windows Server 2019 and Windows Server 2022 is:

<C:\Users\Public\Documents\SimaPro\Database>

Some third-party databases will be installed in a subfolder of the default directory.



If you have a multi-user version and cannot find the database in one of the default directories, open the SimaPro database server. In the list of aliases, you can see the location(s) of the database directories that are being used. If you still cannot see the database(s) you expect, please ask your IT department to check if an alias for the location is defined in the SimaPro database server.

## 4.2 Installing the full update database

Download the file [SetupFullUpdateDatabase960.exe](#) and double-click the file to install the “FullUpdate960” database. Make sure SimaPro is closed otherwise you will receive a warning message. You have to do this on each computer with SimaPro single user installed (you may also copy the files). For the multi-user, one installation is sufficient.

The “FullUpdate960” database will be installed in the default directory (see Box 2 above). Follow the instructions in the setup wizard. This process will install the updated database on your computer, but it will not yet update the active databases.

**Multi-user version:** since we recommend doing the database update locally, the FullUpdate960 database does not have to be installed in one of the locations (directory aliases) defined in the SimaPro database server. Instead, you can directly install it on a local directory and do the update on a local hard drive. Once the update is done, you can then copy your updated database back to the server (see Box 1 above).

### Database management tips

If you notice any older database updates (named FullUpdate920, FullUpdate950, or similar), you can delete these with Windows Explorer to free up disk space and avoid confusion. To avoid deleting useful databases by accident, please open each database before deleting it to check for any projects that need to be kept.

## 4.3 Importing the full update database

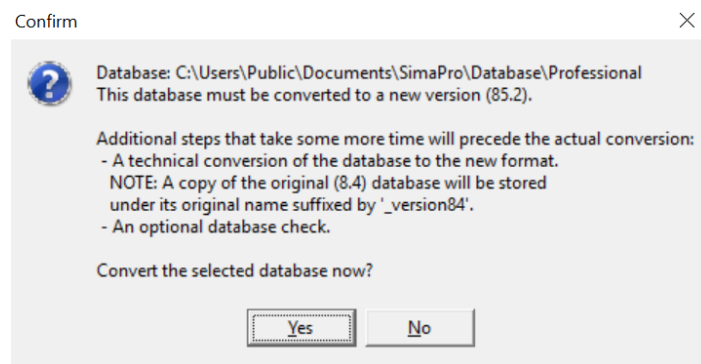


### BEFORE YOU START

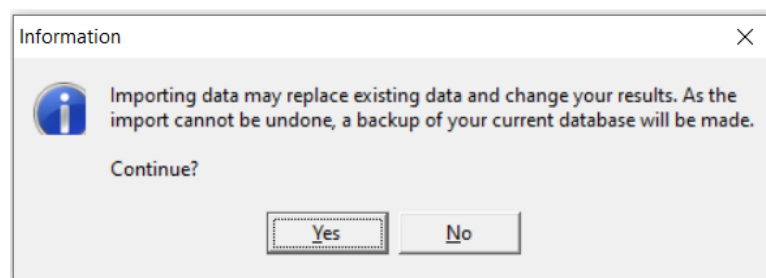
Updating/importing a SimaPro database can take 4-6 hours, depending on the size of your database as well as your computer specs. Please be patient throughout the process (**especially at 96% when SimaPro appears unresponsive**), as aborting or cancelling the procedure can lead to database corruption.

Follow these steps to import the new data:

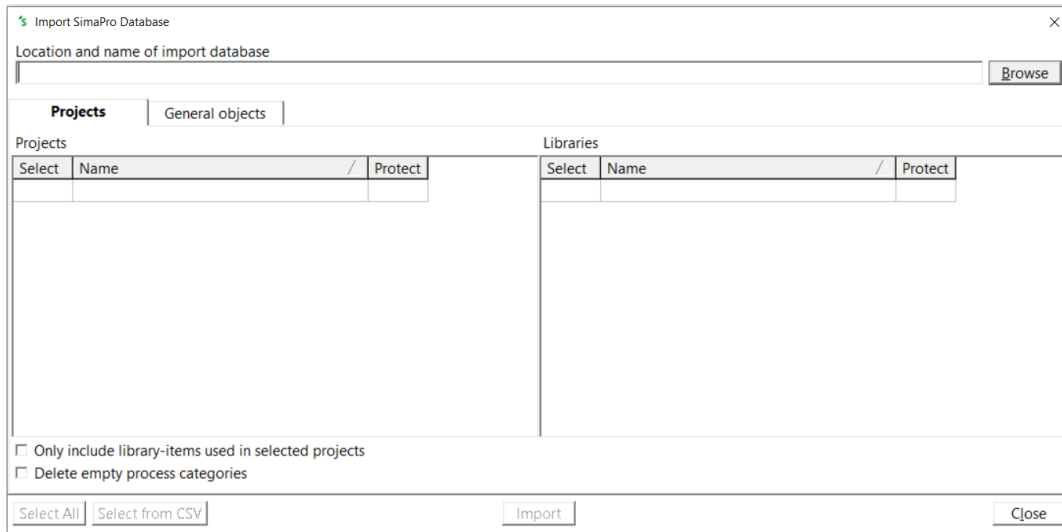
1. Start SimaPro. If you have a multi-user license, you need to first copy the database you want to update to a local path (make sure no other users are logged in at this moment). Then open the database via the local server (see Box 1 above for further details)
2. Check if the database you want to update is open in SimaPro. The database name is found in the top left of the SimaPro window. If the database is not yet opened, go to File > Open SimaPro Database and select the database you want to update (the database you usually work in, for example, the Professional database).
3. **If you are using SimaPro 8:** When opening the database, a technical conversion may take place. **After this conversion, you cannot open the database with older versions of SimaPro. A copy of the database (in SimaPro 8 format) will be created automatically during this process.**



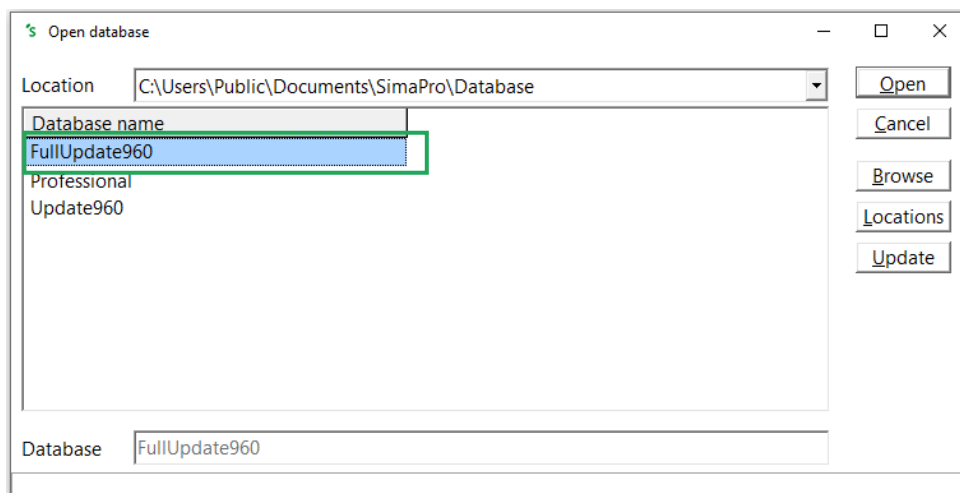
4. Go to File > Import SimaPro Database. Click "Yes" to continue when the message below appears.



5. The "Import SimaPro Database" dialogue box will appear:

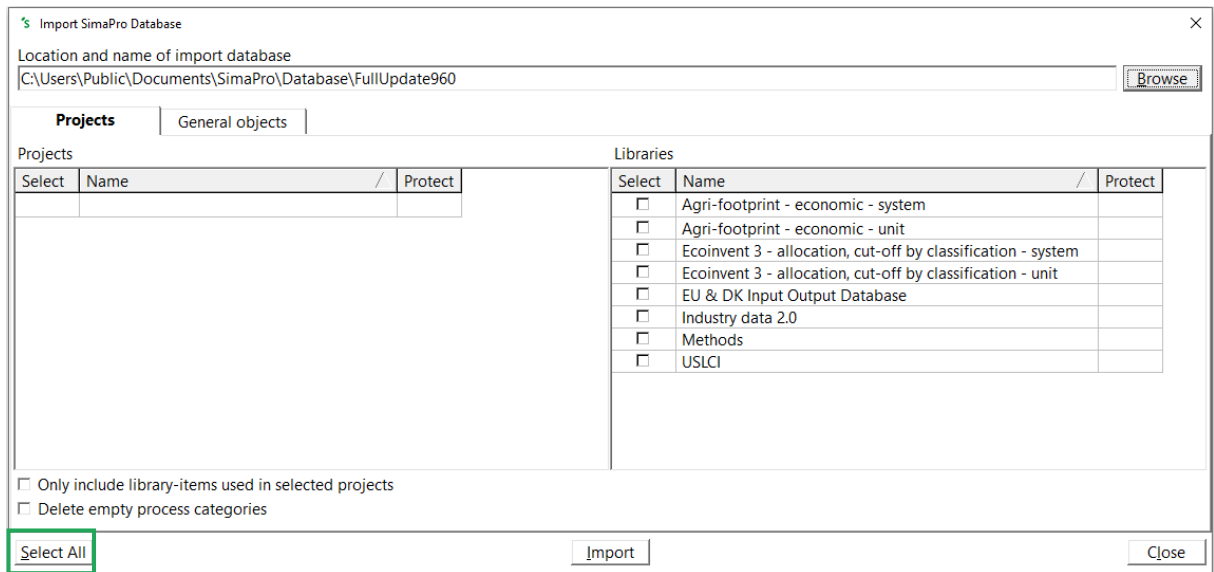


- Click "Browse". The update database (FullUpdate960) will appear in the "Open Database" dialogue box (in multi-user versions, the field "Server" is also shown).

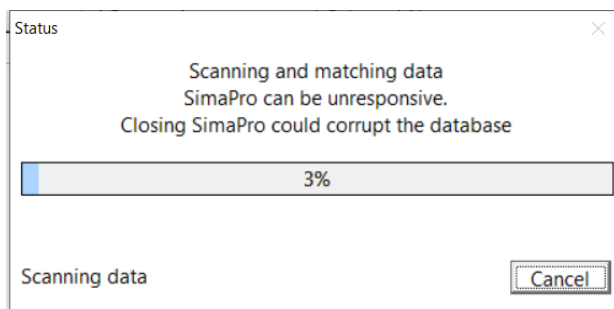


If you do not see the "FullUpdate960" database, click the "Browse" button in the Open database window. By default, the "FullUpdate960" database will be installed in the default directory (see Box 2 in section 4.1). Otherwise, browse to the directory where you installed the update database. Then select the "FullUpdate960" database and click "OK".

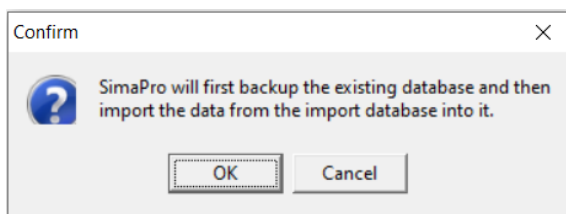
- Click "Open". You will see the libraries that need to be imported. Select those that you want to import. Next, click "Import". Alternatively, click "Select all" at the bottom left of the window.



- The data will be scanned and an overview will be generated of all the data that are added or replaced. We recommend that you save this overview for future reference. Depending on the amount of libraries that will be imported, this process can take quite some time.



- Click "OK" to start the import process. Before data importing starts, the program will prompt you to make a backup.

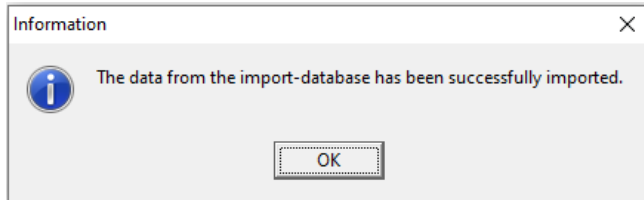


After clicking "OK", select the folder you want the save to backup file in (the default location is C:\Users\[Your Windows User Name]\Documents\SimaPro\Backup). Note: if you click Cancel, the update procedure is stopped.

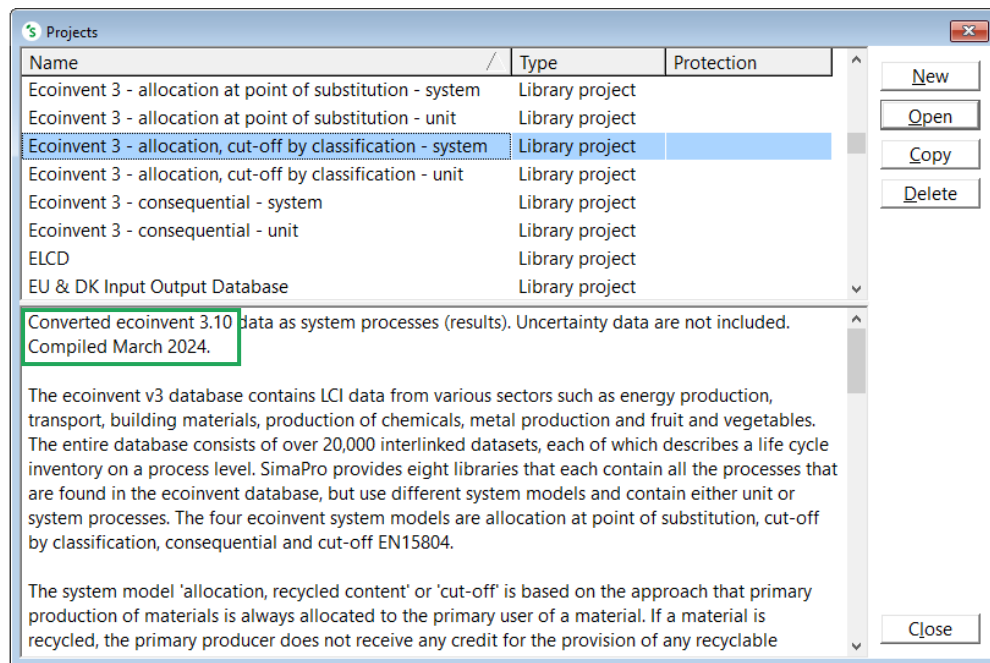
- The data in the FullUpdate960 database will now be imported into the existing database. **This step can take a lot of time (a few hours depending on the size of the database) especially**

when it reaches 96%. SimaPro may seem unresponsive even when the update appears to be finished so please be patient as forcing SimaPro to shut down may risk database damage. For users with multi-user license, see the update tips in Box 1 (section 4.1) to speed up the update process.

11. After the import is successfully completed, the below window will be shown



Your data libraries and methods should then be updated. As a quick check: you should now have ecoinvent 3.10.



### Not all ecoinvent libraries will be updated after import

With the release of SimaPro 9.6, only the ecoinvent 3 – allocation, cut-off by classification (unit and system) libraries will be provided by default in the Professional, Update and FullUpdate databases. This is to deter users from using different models within a project, and to improve data management/updates in general.

As such, after importing the FullUpdate960 database, the ecoinvent 3 – allocation, cut-off by classification data library will show version 3.10, while other ecoinvent libraries (APOS and Consequential) will remain unchanged (so their version number may show as 3.9.1 or earlier).

If you wish to update those libraries as well, you can download the latest version from this [webpage](#) and import them in your updated database by following the same instructions above.

**Box 3. Import errors**

Should SimaPro report any import errors, please save the log file and take screenshots if possible. The overview of issues in the log file may help you to find out what went wrong. For assistance, please send an email to SimaPro support at [support@simapro.com](mailto:support@simapro.com) and include the log file and any screenshots as attachments.

We appreciate it if you could include the results of the database check, which can be done via File > SimaPro Database Management > Check (for multi-user, you will need to log in as Manager to be able to do the database check).

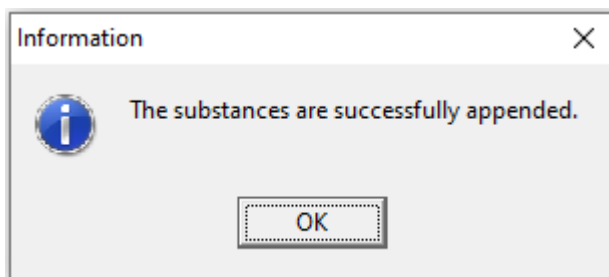
## 4.4 Appending substances

The next step is to do an “append substances” action to convert some old substance names in your database to the latest substance naming convention in SimaPro. If you do not do this, mismatches between life cycle inventory and impact assessment data may occur, leading to incorrect LCA results. The replacements are defined in the append file that is installed with the update database.

Appending merges two synonymous substance names into one. For example, CO<sub>2</sub> needs to be appended to Carbon dioxide, the latter being the name used in the most recent version of SimaPro and in the impact assessment methods. Without appending CO<sub>2</sub> to Carbon dioxide, any use of the substance named CO<sub>2</sub> in processes will not show in the impact assessment results.

To perform the Append action:

1. Go to the “Substances” section under General Data in the LCA Explorer screen.
2. Click “Append”. A new window will open.
3. Click “Load” on the right-hand side and select the append file: AppendSubstances960.xlsx. The append file is found in the same directory as the Full Update database (see Box 2 for default directories).
4. Click “Append” on the right-hand side of the window. After a final confirmation and an option to make a backup file, the substances will be appended. Depending on the size of your database, this may take some time.
5. Once you see the following window, the Append process has been done successfully



### Prompts on Append

We strongly recommend you to run Append whenever you import data libraries. Therefore, instead of seeing “substances are successfully appended”, it is possible that you may see different prompts after running Append, such as:

#### 1. The selected append file doesn't contain any data that can be processed for this database

This warning means that there are no new substances to be appended. Your data is already up to date and you are good to go. You can simply press “OK”.

#### 2. Conflicts on Append

This error implies that there are two synonymous substances that are both used in a single impact category but with different characterization factors. When this happens, SimaPro offers to use the factors of the target substances and you can proceed to remove this conflict by clicking Details > Remove conflicts and then save the conflicts. Otherwise, the Append will not be done. Once the conflict is solved, it is possible that results with the correspondence method can change considerably. Thus, it is recommended to make a backup so you can trace back any differences.

## 4.5 Updating links in your projects to ecoinvent 3.10

### 4.5.1 Updating links from ecoinvent 2.2 to ecoinvent 3.10

When carrying out the full update, if the ecoinvent 2.2 data library was available in your database, it will remain alongside the new ecoinvent 3.10 library. Furthermore, any links in your projects to ecoinvent 2.2 will remain intact.

If you wish to change those links from ecoinvent 2.2 to the most recent equivalent version in ecoinvent 3.10 (where possible), you can use the Projects to Libraries Links manager to replace the links manually (please refer to [section 4.5.2](#)).

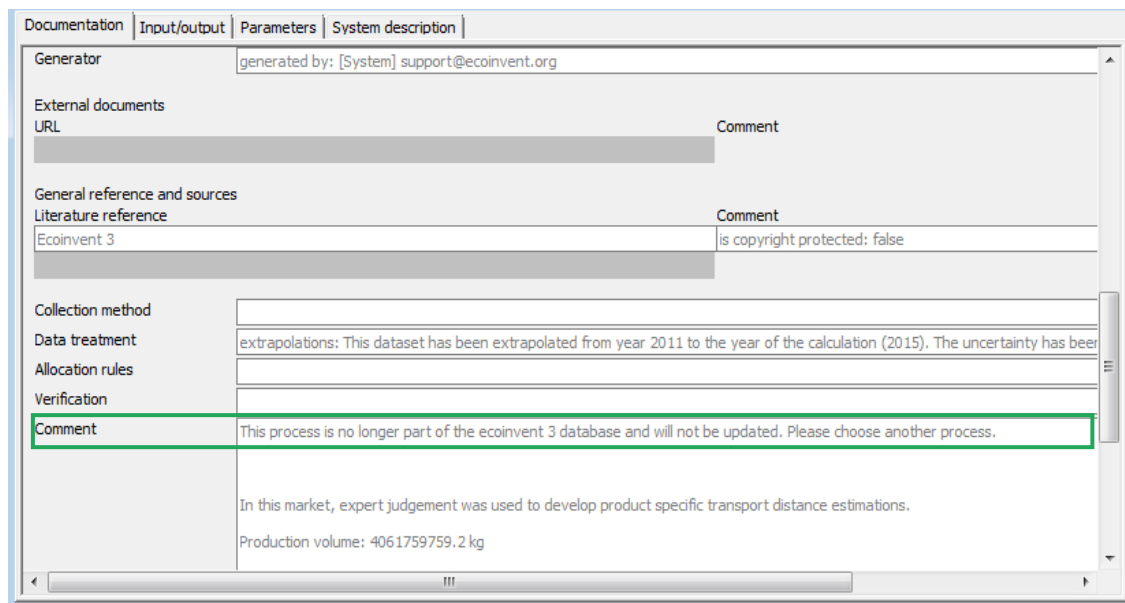
### 4.5.2 Updating obsolete links to ecoinvent 3.10

Since ecoinvent 3.1 to 3.9.1 will be replaced by the updated 3.10 library, the majority of links will be updated automatically to ecoinvent 3.10. However, a number of processes are no longer supported and are considered obsolete.

### How can I tell which processes are now obsolete?

The quickest way to review the obsolete processes is by checking the 'Obsolete' sub-categories in the ecoinvent 3.10 processes for material, energy, transport, etc. (Inventory > Processes > Material > Others > Obsolete). In the Documentation tab of these processes, the Comment field states that the correspondence process is no longer part of the ecoinvent 3 database (see screenshot below). If you select any of those processes and click on 'Used by', you will get an overview of the projects which are using the selected obsolete process.

In addition, if you calculate a process or product stage that is or contains an obsolete process, you will get a warning message. The warning message indicates which process(es) are obsolete. You can then replace them using the replacement files (if possible) or manually.



Considering that you may have used some of these obsolete processes in your projects, PRé has created special a replacement file to allow you to change most of these obsolete links from older ecoinvent 3 versions to the correct processes in ecoinvent 3.10 in a fast and easy way. With this update, the following replacements file is available: **Replace EI 3.x to 3.10 Cut off library.xlsx**. The replacement file can be found in same directory as the Full Update database (see Box 2 for default directories)

### Replacement files for APOS & Consequential

With the release of SimaPro 9.6, only ecoinvent allocation, cut-off by classification is included by default in the SimaPro database (Professional, Update960, FullUpdate960). If you wish to also replace obsolete links for ecoinvent APOS & consequential, you can download the database from this [webpage](#). The replacement files are then included in the installer.

Please note that using the replacement files **does not** replace all obsolete processes. Some processes are disaggregated into more specific products or regions. In these specific cases, users should assume and decide themselves which activity is the best replacement. SimaPro will



generate a warning when you make a calculation and finds that an obsolete process is still being used in your model. In that case, you need to manually replace the process with a process that is more suitable. See [section 4.5.2.2](#) for further instructions on how to do manual replacement.

### Obsolete processes not included in the replacement files

Please review the spreadsheet '[Obsolete Processes without Replacement ecoinvent 3.9.1 to 3.10](#)' to check the reason why the former ecoinvent activity does not exist in ecoinvent 3.10 anymore.

### Tips in updating obsolete links

It is recommended to **first use the replacement files to replace as many links as possible**. After that, if you receive a message while calculating in SimaPro that your model includes obsolete processes, you can replace those manually. Please refer to [section 4.5.2.1](#) and [section 4.5.2.2](#) below for further instructions.

You can also filter only on obsolete processes by selecting "only show obsolete processes" menu on the bottom left of the window:

The screenshot shows the 'Links' window in SimaPro. The window title is 'Projects and libraries Links'. It contains a table with the following columns: Line, Part, Parent type, Parent name / Child library, Child type, Child name, and Replace name. The table lists six links, all with 'Test' as the Part and 'Material' as the Parent type. The Child library for all links is 'Ecoinvent 3 - allocation, cut-off by classification - system'. The Child type and Child name vary: Line 1 is Material (Cement, unspecified [RoW] cement, Portlan); Line 2 is Energy (Electricity, for reuse in municipal waste incin); Line 3 is Processing (Extrusion, plastic pipes [RoW] production |); Line 4 is Energy (Heat, for reuse in municipal waste incinerati); Line 5 is Processing (Irrigation [BR] market for irrigation | Cut-of); Line 6 is Transport (Transport, freight, aircraft [RER] transport, fr). At the bottom of the window, there is a toolbar with buttons: Store, Copy, Go to, Select, Scan, Import replacements, Export replacements, Replace, and a checkbox labeled 'Only show obsolete processes' which is currently unchecked.

Line	Part	Parent type	Parent name /	Child library	Child type	Child name	Replace name
1	Test	Material	Bottle	Ecoinvent 3 - allocation, cut-off by classification - system	Material	Cement, unspecified [RoW] cement, Portlan	
2	Test	Material	Bottle	Ecoinvent 3 - allocation, cut-off by classification - system	Energy	Electricity, for reuse in municipal waste incin	
3	Test	Material	Bottle	Ecoinvent 3 - allocation, cut-off by classification - system	Processing	Extrusion, plastic pipes [RoW] production	
4	Test	Material	Bottle	Ecoinvent 3 - allocation, cut-off by classification - system	Energy	Heat, for reuse in municipal waste incinerati	
5	Test	Material	Bottle	Ecoinvent 3 - allocation, cut-off by classification - system	Processing	Irrigation [BR] market for irrigation   Cut-of	
6	Test	Material	Bottle	Ecoinvent 3 - allocation, cut-off by classification - system	Transport	Transport, freight, aircraft [RER] transport, fr	

#### 4.5.2.1 Using the replacement files

Follow the next steps for replacing the obsolete links in your project using one of the replacement files. You can also refer to [this video](#) for general instructions on using the tool: Projects to Libraries Links Manager.

1. Open a project in your updated database. This can be any project.
2. Go to Tools > Projects to Libraries Links Manager.

3. Select the project(s) of which you want to change links (press Ctrl+A to select all projects and Ctrl+Shift+A to deselect). You can use the filter to select project(s) by (part of the) name.
4. Select the ecoinvent libraries where you want to replace the links.

**Note: make sure that these ecoinvent libraries are also selected in the Libraries section in SimaPro.**

5. Click "Scan".
6. View the links found by clicking on the tab "Links".
7. Click on the "Import replacements" button.
8. Select the appropriate Replacement file which can be found in the database directory (see Box 2) and click "Open".

9. Check the links which are going to be replaced in the column "Replace name".

**Note: It is possible that there are no replacements found. This means that the projects you selected do not contain links that can be replaced using the replacement files. Nevertheless, there may still be some links that need to be replaced manually.**

10. Store your links in order to be able to check afterward. It is also possible to add new replacement links yourself.
11. Click "Replace" to replace the links to the chosen library. You will get a message on how many links are replaced to the chosen library.

#### 4.5.2.2 Manual replacement (or creating your own replacement file)

Once you determine that your project(s) still contain obsolete links, you can replace these manually by selecting an alternative process in the relevant process or product stages records. You can also use the Projects to Libraries Links Manager to manually replace multiple links that were not replaced using replacement files (please also refer to [this video](#) for an example).

1. Go to Tools > Projects to Libraries Links Manager.
  2. Select the ecoinvent libraries where you want to replace the links.
- Note: make sure that these ecoinvent libraries are also selected in the Libraries section in SimaPro.**
3. Click "Scan".
  4. View the links found by clicking on the tab Links. The column "Child name" shows the original links.
  5. Double click any of the empty cells you want to replace under the column "Replace name".
  6. A dialogue box will open in which you can choose an alternative link in the preferred library. Use the function "Show as list" on the right-hand side of the screen to list all links. Filter the links from the preferred library by entering the suffix of that library in the filter box at the bottom of your screen.
  7. Choose the preferred link and click "Select".
  8. You will get a message: 'Links referencing the same product. Use the selected replacement for them too?' These are the same links which are used in different projects or within

projects. Choose "Yes" to replace all links. If you click "No" only the selected link will be replaced.

9. Click "Replace" to replace the links. If you want to replace all links at once and you did not finish the work, you can export the previously selected links to Excel and import them at a later stage by clicking "Export replacements" and saving your replacement file.

**You have now finished the update procedure! Repeat for any other database you wish to update.**

## 5 Contact us

Please contact us or your [local partner](#) if you have questions about new features in the SimaPro software or database, or if you have any other questions related to the update.

- In SimaPro: Help > Contact SimaPro Support (**recommended**)
- SimaPro Help Center contact form: <https://support.simapro.com/s/contactsupport>
- E-mail: [support@simapro.com](mailto:support@simapro.com)
- Phone: +31 33 4504010