

# Update instructions

## SimaPro 9.1.0 to SimaPro 9.1.1

**Title:** Update instructions SimaPro 9.1.0 to SimaPro 9.1.1

**Written by:** Michiel Oele, Ruba Dolfing Fanous, PRé Sustainability

**Version:** 1.1

**Date:** October 2020

**Copyright:** © 2020 PRé Sustainability B.V. All rights reserved.

PRé grants the right to distribute and print the unchanged PDF version of this manual for non-commercial purposes only.

Parts of the manual may be reproduced in other work only after permission and if a clear reference is made that PRé is the author.

---

## About SimaPro

SimaPro was developed by PRé with the goal of making sustainability a fact-based endeavor. PRé has been a leading voice in sustainability metrics and life cycle thinking development for nearly 30 years, pioneering the field of environmental and social impact assessment. We develop tools that help you create value and drive sustainable change.



SimaPro is distributed through a Global Partner Network. All partners were carefully selected by PRé. A partner in your country will act as your local SimaPro sales and support representative and can show you a personal demo or provide more information.

Find your local partner: [simapro.com/global-partner-network](https://simapro.com/global-partner-network)

## Get in touch

T +31 33 450 40 10

E [support@simapro.com](mailto:support@simapro.com)

W [simapro.com](https://simapro.com) | [support.simapro.com](https://support.simapro.com) | [pre-sustainability.com](https://pre-sustainability.com)

# Table of contents

<b>1</b>	<b>Introduction .....</b>	<b>4</b>
1.1	What to expect after an update	4
<b>2</b>	<b>Updating the SimaPro software.....</b>	<b>6</b>
2.1	Updating the SimaPro database server (multi-user versions only)	6
2.2	Procedure for updating single-user and multi-user client	6
<b>3</b>	<b>Updating the database .....</b>	<b>7</b>
3.1	Database update	7
3.2	Installing the update database	8
3.3	Importing the update database	8
3.4	Appending substances	11
3.5	Updating Agri-footprint 4 projects to Agri-footprint 5	11
3.5.1	Using the replacement files	12
<b>4</b>	<b>Contact us.....</b>	<b>12</b>

# 1 Introduction

This document describes how to update your current software and database from SimaPro 9.1.0 to the new SimaPro 9.1.1. In the [What's new in SimaPro 9.1.1](#) manual, you will find information about the changes in the data, methods and software.

The update procedure can be summarized as follows:

1. **Software update:** Update your SimaPro single-user or multi-user client software to SimaPro 9.1.1. For multi-user licenses, you also need to update the SimaPro database server (only if the version is earlier than 9.0.0.49).
2. **Database update:** Import the update database which includes the new and updated data and methods. This part can take at least a couple of hours – depending on the size of your database.

Please read on for detailed instructions. Should you still have questions, please contact your local [SimaPro partner](#) or SimaPro Support by email at [support@simapro.com](mailto:support@simapro.com).

## 1.1 What to expect after an update

In SimaPro, the software is separate from the database. Thus a SimaPro update consists of an update of the software components, in addition to an update of the database contents with additional steps like appending substance and replacement of processes. Only after you have done both will you have completed the update.

Please note that every update is unique and may contain special instructions for that particular update, so please make sure to go through the update instructions carefully.

The frequently asked questions below provide a better understanding of what to expect after an update:

- **What if I only update the software?**

When you update the software – your database contents remain unchanged. So, essentially you get a newer software version that contains new software features and less bugs. Again, it is important to realize that a software update does not change any library, project data or methods in your database.

*Example:* You used to work with SimaPro 9.0 with ecoinvent 3.5. If you only do the software update, your version will be updated to SimaPro 9.1.0, but you will still be working with ecoinvent 3.5 (and not ecoinvent 3.6).

- **After a software update, why do I sometimes need to do a technical conversion of the database when I first open it in SimaPro?**

A technical conversion allows your database to be opened by the newer software version, but does not change the contents of the database.

Please note that once a technical conversion takes place, you cannot open that particular database with older SimaPro versions.

- **After I update the database, what happens to my data?**

Below is an overview of how your data *may* change – but please keep in mind this depends on whether the libraries and methods you are using have been updated in that specific release.

- **Library processes:** in most cases\*, library processes will be automatically updated. So, for example, an ecoinvent process from version 3.5 will be replaced by an updated version from ecoinvent 3.6.
- **Custom processes:** links to library processes will (in most cases\*) be automatically updated to link to the newer version of the dataset. The rest remains unchanged.
- **Default impact assessment methods:** the default impact assessment methods originally provided by PRé will be automatically updated (replaced) by the newer version – given that you did not change the name of the method.
- **Custom impact assessment methods:** these will remain unchanged.
- **Substances:** appending may merge one or more synonyms to one substance name and could change the result if the “final” substance is included in an impact assessment method and the previous was not.

*\*Sometimes there are processes that become obsolete and are not automatically updated. These need additional handling by the user.*

- **After a software update, can I expect my results to change?**

No as you have not (yet) updated the database.

- **After a database update, can I expect my results to change?**

Most probably yes – that could be due to the changes in the library data or changes to the impact assessment method(s) used.

## 2 Updating the SimaPro software

### 2.1 Updating the SimaPro database server (multi-user versions only)

#### Single user vs. multiuser

If you are working with a single user SimaPro license – please start with section 2.2. Updating the database server is only relevant for multi-user licenses.

You only need to update the SimaPro database server if the version is earlier than **9.0.0.49!**

We recommend that multi-user updates are done by your network administrator. Please begin by updating the SimaPro database server. It is important to note that the any defined Aliases remain intact after the update. To update the SimaPro database server:

1. Download the server installation file [SetupServer911.exe](#) to the machine running the SimaPro database server.
2. Right-click **SetupServer911.exe** and select 'Run as administrator' to start the installation.
3. Follow the instructions in the setup wizard. You may be asked for your SimaPro registration name and code. The current SimaPro database server software will be uninstalled and then replaced with the latest software. Note that your database(s) will **not** be uninstalled!
4. If you have installed the database server as a service: check if the service is running via Taskmanager. Go to the Services tab, and look for nxSPServer2 to check. If it is not running, you can start the service via a right mouse click.

Next, all SimaPro multi-user clients have to be updated to SimaPro 9.1.1. This is explained in the next section.

### 2.2 Procedure for updating single-user and multi-user client

The procedure for updating the single-user and multi-user SimaPro client software is as follows:

1. Download the SimaPro installation file [SetupSimaPro911.exe](#) to each computer that runs the SimaPro single-user or SimaPro multi-user client.
2. Double-click **SetupSimaPro911.exe** to start the installation. Follow the instructions in the setup wizard. You may be asked for your SimaPro registration name and code. The current SimaPro software will be uninstalled and then replaced with SimaPro 9.1.1. Note that your database(s) will **not** be uninstalled!

Next, proceed with the database update procedure as described in section 3.

## 3 Updating the database

### 3.1 Database update

This chapter describes how to update your database. This part can take at least a couple of hours – depending on the size of your database. The update process consists of four parts:

1. Installing the update database that contains the new data.
2. Importing the update database into your SimaPro database(s).
3. Doing an append action to merge synonyms in the substance list.
4. (Optional) Updating obsolete links in your projects.

These steps are described in detail in the following sections. In Box 1 and 2 you will find tips for updating multi-user licenses and an overview of the default database locations. You have to follow the database update procedure for each SimaPro database that you want to update.

#### Updating SimaPro Classroom

Owners of an educational Classroom license do not have “local server” database access, but should request a temporary single-user license via [support@simapro.com](mailto:support@simapro.com) to do the update locally. We will include further instructions on how to update.

#### Box 1. Updating a database in a multi-user environment

In a multi-user environment, updating a database directly on the database server is very slow due to additional network traffic. If you have one of the professional multi-user licenses, you can also do the database update locally on a (fast) PC with the SimaPro client installed. This is much quicker.

To do that, login as Manager and check under Tools, User Management that no users are logged into the SimaPro database. If so, you can close SimaPro. Locate the database on the server's hard drive (see Box 2 for default locations) and copy the database (a set of 77 numbered \*.NX1 files) to your local hard drive. In the “Open SimaPro Database” window, choose “Local server”, browse to the directory you copied the database to. Continue with the update instructions in section 3.2. After updating, copy the database back to its original location on the server.

### Box 2. Default directories

SimaPro installs updates in the default database directory if no other location is chosen. The default directory for Windows 8, Windows 10 and Windows server 2012 onwards is:

C:\Users\Public\Documents\SimaPro\Database\

Some third party databases may be installed in a subfolder of the default directory.

If you have a multi-user version and cannot find the database in one of the default directories, open the SimaPro database server. In the list of aliases you can see the location(s) of the database directories that are being used. If you still cannot see the database(s) you expect, please ask your IT department to check if an alias for the location is defined in the SimaPro database server.

## 3.2 Installing the update database

Download [SetupUpdateDatabase911.exe](#) and double-click the file to install the “Update911” database. You have to do this on each computer with SimaPro single user installed. For the multi-user, one installation is sufficient.

The “Update911” database will be installed in the default directory (see Box 2 above). Follow the instructions in the setup wizard. This process will install the update database on your computer, but it will not yet update the active databases.

*Multi-user version:* since we recommend doing the database update locally, the update database does not have to be installed in one of the locations (directory aliases) defined in the SimaPro database server. Instead, you can do the update on a local hard drive and then copy your updated database back to the server (see Box 1).

If you notice any older update databases (named Update802, Update805, Update900 or similar) and you are sure you already imported these updates, you can delete these with Windows Explorer to free up disk space and avoid confusion. To avoid deleting useful databases by accident, please open each database before deleting it to check for any projects that need to be kept.

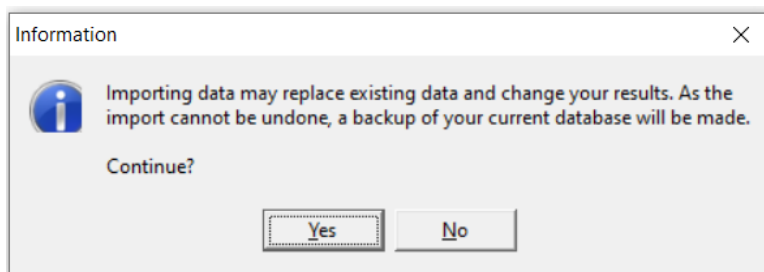
## 3.3 Importing the update database

Follow these steps to import the new data:

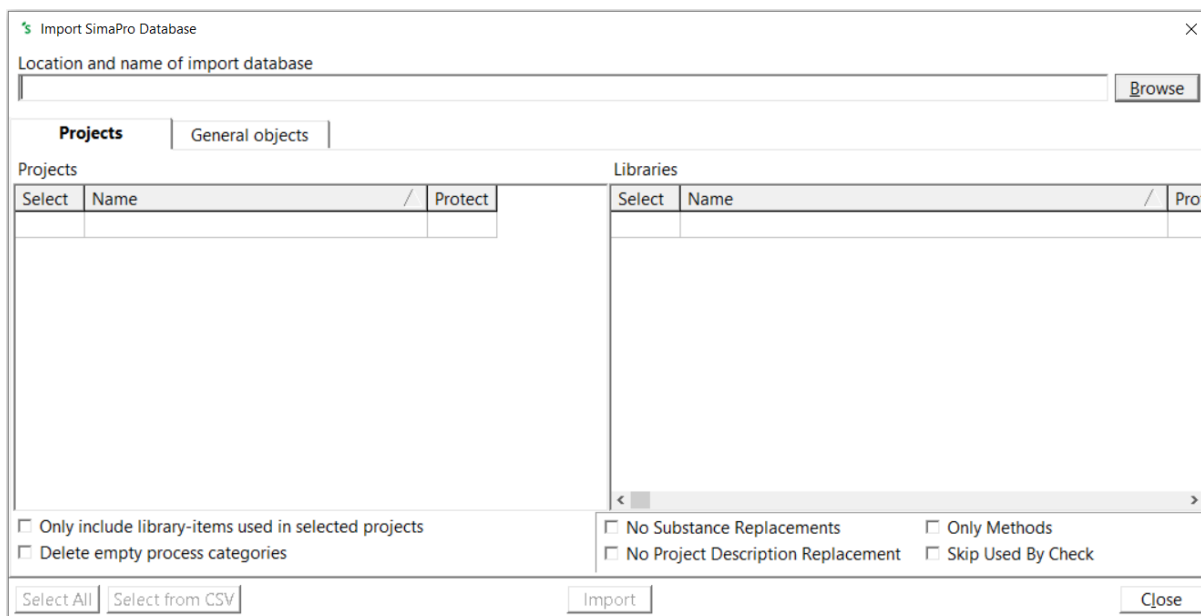
1. Start SimaPro 9.1.1 If you have a multi-user SimaPro license, log in as Manager. Make sure no other users are logged in at the moment, because the database will be locked during import. During the update process, users cannot log in to SimaPro.



2. Check if the database you want to update is open in SimaPro. The database name is found in the blue bar at the top of the SimaPro window. If the database is not open, go to File> Open SimaPro Database and select the database you want to update (the database you usually work in, for example Professional).
3. Go to File > Import SimaPro Database. Click "Yes" to continue when the message below appears.



4. The "Import SimaPro Database" dialogue box will appear:

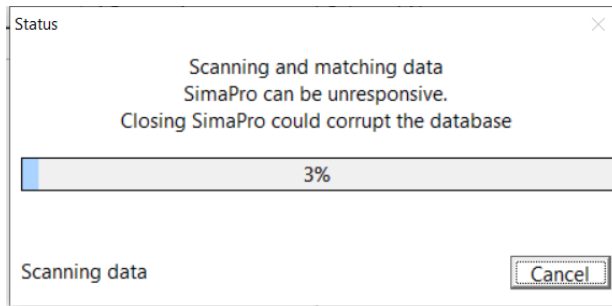


5. Click "Browse". The update database (Update911) will appear in the "Open Database" dialogue box (in multi-user versions, the field "Server" is also shown).

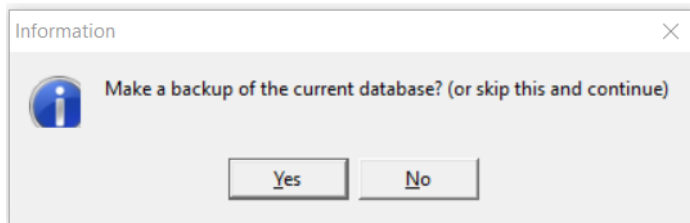
If you do not see the "Update911" database, click the "Browse" button in the Open database window. Browse to the directory where you installed the update database, select the "Update911" database (see Box 2 for the default directory) and click "OK".

6. Click "Open". You will see the libraries that need to be imported. Click "Select all" at the bottom left of the window. Next, click "Import".

7. The data will be scanned and an overview will be generated of all the data that are added or replaced. We recommend that you save this overview.



8. Click "OK" to start the import process. Before data importing starts, the program will prompt you to make a backup.



After clicking "OK", select the folder you want the save to backup file in (for example, the default directory; see Box 2). Note: if you click "Cancel", the update procedure is stopped.

9. The data in the update database will now be imported into the existing database. This step can take a lot of time (a few hours depending on the size of our database) and thus requires patience - **forcing SimaPro to shut down risks database damage!**
10. After the import is successfully completed, your data libraries and methods should be updated (quick check: you should now see Agri-footprint 5 in the Open Project window).

### Box 3. Import errors

Should SimaPro report any import errors, please save the log file and make screenshots if possible. The overview of issues in the log file may help you to find out what went wrong. For assistance, please send an email to the SimaPro helpdesk at [support@simapro.com](mailto:support@simapro.com) and include the log file and any screenshots as attachments.

We appreciate it if you could include the results of the database check, which can be done via File > SimaPro Database Management > Check Database.

## 3.4 Appending substances

The next step is to do an “append substances” action to convert some old substance names in your database to the latest substance naming convention in SimaPro. If you do not do this, mismatches between life cycle inventory and impact assessment data may occur, leading to incorrect LCA results. The replacements are defined in the append file that is installed with the update database.

Appending merges two synonymous substance names into one. For example, CO<sub>2</sub> needs to be appended to Carbon dioxide, the latter being the name used in the most recent version of SimaPro and in the impact assessment methods. Without appending CO<sub>2</sub> to Carbon dioxide, any use of the substance named CO<sub>2</sub> in processes will not show in the impact assessment results.

1. Go to the “Substances” section under “General Data” in the LCA Explorer screen.
2. Click “Append”. A new window will open.
3. Click “Load” on the right hand side and select the append file: “AppendSubstances911.xlsx”. The append file is found in the same directory as the update database (see Box 2 for default directories). **Note:** If no data are loaded for replacement, your database is up to date!
4. Click “Append” on the right hand side of the window. After a final confirmation, and option to make a backup file, the substances will be appended. Depending on the size of your database, this may take some time.

## 3.5 Updating Agri-footprint 4 projects to Agri-footprint 5

After completing the database update, your Agri-footprint 4.0 library will be updated to version 4.1. You should now also have Agri-footprint 5 alongside version 4.1.

Since the Agri-footprint 4 library is not automatically updated to the Agri-footprint 5 library, PRé and Blonk Consultants created replacement files to switch the links in your project(s) from Agri-footprint version 4 to version 5 in a fast and easy way. With this update, the following replacements files are available:

1. Replace AFP 4 to AFP 5 economic
2. Replace AFP 4 to AFP 5 gross energy
3. Replace AFP 4 to AFP 5 mass

Please note that using the replacement files does not replace all obsolete processes. Some processes are disaggregated into more specific products or regions; in these specific cases the users should really judge themselves which activity is the best replacement.

SimaPro will generate a warning when you make a calculation and finds that an obsolete process is still being used in your model. In that case, you need to manually replace the process with a process that is more suitable.

### 3.5.1 Using the replacement files

Follow the next steps for replacing the obsolete links in your project using one of the replacement files. You can also refer to [this video](#) for general instructions on using the tool: Projects to Libraries Links Manager.

1. Open a project in your updated database. This can be any project.
2. Go to Tools>Projects to Libraries Links Manager.
3. Select the project(s) of which you want to change links (press Ctrl-A to select all projects and Ctrl-Shift-A to deselect). You can use the filter to select project by (part of the) name.
4. Select the Agri-footprint libraries where you want to replace the links.

**Note: make sure that these libraries are also selected in the Libraries section in SimaPro.**

5. Click "Scan".
6. View the links found by clicking on the tab "Links".
7. Click on the "Import replacements" button.
8. Select the appropriate Replacement file which can be found in the database directory and click "Open".
9. Check the links which are going to be replaced in the column "Replace name".

**Note: It is possible that there are no replacements found. That means that projects you selected do not contain links that can be replaced using the replacement files. Nevertheless, there may still be some links that need to be replaced manually.**

10. Store your links in order to be able to check afterwards. It is also possible to add new replacement links yourself.
11. Click "Replace" to replace the links to the chosen library. You will get a message how many links are replaced to the chosen library.

## 4 Contact us

Please contact us or your [local partner](#) if you have questions about new features in the SimaPro software or database, or if you have any other questions related to the update.

- Website: <https://support.simapro.com/>
- Email: [support@simapro.com](mailto:support@simapro.com)
- Phone: +31 33 450 4010