



Update instructions SimaPro 8.5 to SimaPro 9.0

Colophon

Title :	Update instructions SimaPro 8.5 to SimaPro 9.0
Written by:	PRé Consultants Michiel Oele, Ruba Dolfing Fanous
Report version:	1.1
Date:	February 2019
Language:	English
Availability:	PDF
Copyright:	© 2019 PRé Consultants bv. All rights reserved. PRé grants the right to distribute and print the unchanged PDF version of this manual for non-commercial purposes only. Parts of the manual may be reproduced in other work only after permission and if a clear reference is made that PRé is the author.
Phone:	+31 33 4504010
Email:	support@pre-sustainability.com
Website:	simapro.com

Contents

1	INTRODUCTION.....	3
2	PERFORM DATABASE CHECK WITH SIMAPRO 8	3
3	UPDATING THE SIMAPRO SOFTWARE.....	3
3.1	UPDATING THE SIMAPRO DATABASE SERVER (MULTI-USER VERSIONS ONLY)	3
3.2	PROCEDURE FOR UPDATING SINGLE-USER AND MULTI-USER CLIENT.....	4
4	UPDATING THE DATABASE	4
4.1	DATABASE UPDATE	4
4.2	INSTALLING THE UPDATE DATABASE	5
4.3	IMPORTING THE UPDATE DATABASE.....	6
4.4	APPENDING SUBSTANCES	8
4.5	UPDATING OBSOLETE LINKS IN YOUR PROJECTS TO ECOINVENT 3.5.....	9
4.5.1	Using the replacement files	10
4.5.2	Manual replacement (or creating your own replacement file).....	10
5	CONTACT Us.....	11

1 Introduction

This document describes how to update your current software and database from SimaPro 8.5 to the new SimaPro 9.0. In the “What’s new in SimaPro 9.0” document, you will find information about the changes in the data, methods and software.

You will find detailed instructions below. Please read these carefully. Should you still have questions, please contact your local [SimaPro partner](#) or the PRé helpdesk by email at support@pre-sustainability.com. You may also contact us by phone at +31-33-4504010.

A summary of the update procedure

The update procedure can be summarised as follows:

1. **Software update:** Update your SimaPro 8.5 single-user or multi-user client software to SimaPro 9.0. For multi-user licenses, you also need to update the SimaPro database server.
2. **Database update:** Import the update database which includes the new and updated data and methods.

2 Perform database check with SimaPro 8

Before you update your software to SimaPro 9, we recommend that you first carry out a database check using your current SimaPro 8 installation. This will avoid you converting a potentially corrupt database to SimaPro 9 which can make it harder to repair.

You only need to do this step for the database(s) that you intend to update.

To carry out a database check:

- Open the database: File> Open SimaPro Database.
- Choose File> Database management> Check. This check may take a while.
- If the check shows no errors, please proceed with section 3.
- If the error shows errors that can be repaired automatically, please do so and then proceed with section 3.
- If other errors are shown, with no possibility of repair, please select Store. This will save the error log as a .txt file.
- Send the text file to support@pre-sustainability.com and we will advise you on next steps.

3 Updating the SimaPro software

3.1 Updating the SimaPro database server (multi-user versions only)

Single user vs. multiuser

If you are working with a single user SimaPro license – please start with section 3.2! Updating the database server is only relevant for multi-user licenses.

We recommend that multi-user updates are done by your network administrator. Please begin by updating the SimaPro database server. It is important to note that the defined Aliases remain intact after the update. To update the SimaPro database server:

1. Download the server installation file [SetupServer900.exe](#) to the machine running the SimaPro database server.
2. Right-click **SetupServer900.exe** and select 'Run as administrator' to start the installation.
3. Follow the instructions in the setup wizard. You may be asked for your SimaPro registration name and code. The current SimaPro database server software will be uninstalled and then replaced with the latest software. Note that your database(s) will not be uninstalled!

Next, all SimaPro 8.5 multi-user *clients* have to be updated to SimaPro 9.0. This is explained in the next section.

3.2 Procedure for updating single-user and multi-user client

The procedure for updating the single-user and multi-user SimaPro client software is as follows:

1. Download the SimaPro installation file [SetupSimaPro900.exe](#) to each computer that runs the SimaPro single-user or SimaPro multi-user client.
2. Double-click **SetupSimaPro900.exe** to start the installation. Follow the instructions in the setup wizard. You may be asked for your SimaPro registration name and code. The current SimaPro software will be uninstalled and then replaced with SimaPro 9.0.0. Note that your database(s) will not be uninstalled!

Next, proceed with the database update procedure as described in section 4.

4 Updating the database

4.1 Database update

This chapter describes how to update your database. The update process consists of four parts:

1. Installing the update database that contains the new data.
2. Importing the update database into your SimaPro database(s).
3. Doing an append action to merge synonyms in the substance list.
4. Updating obsolete links in your projects.

These steps are described in detail in the following sections. In Box 1 and 2 you will find tips for updating multi-user licences and an overview of the default database locations. You have to follow the database update procedure for each SimaPro database that you want to update.

Updating SimaPro Classroom

Owners of an educational Classroom licence do not have "local server" database access, but should request a temporary single-user licence via support@pre-sustainability.com to do the update locally. We will include further instructions on how to update.

Please note that any *changes* you have made in the library entries or in the original methods supplied in the Methods library will be lost during the update. Processes, product stages or methods that you have *added* (for example by copying) to the libraries that are to be updated will still be there. [Contact us](#) for assistance if you wish to keep your changes.

Box 1. Updating a database in a multi-user environment

In a multi-user environment, updating a database directly on the database server is very slow due to additional network traffic. If you have one of the professional multi-user licences, you can also do the database update locally on a (fast) PC with the SimaPro client installed. This is much quicker.

To do that, login as Manager and check under Tools, User Management that no users are logged into the SimaPro database. If so, you can close SimaPro. Locate the database on the server's hard drive (see Box 2 for default locations) and copy the database (a set of 77 numbered *.NX1 files) to your local hard drive. In the "Open SimaPro Database" window, choose "Local server", browse to the directory you copied the database to. Continue with the update instructions in section 3.2. After updating, copy the database back to its original location on the server.

Box 2. Default directories

SimaPro installs updates in the default database directory if no other location is chosen. The default directory depends on the version of Windows where your database server is running:

- Windows 7, Windows 8, Windows 10, Windows 2008 server, Windows 2012 server:
C:\Users\Public\Documents\SimaPro\Database\
- Windows 2003 server: C:\Documents and Settings\All Users\Shared Documents\SimaPro\Database

If you have a multi-user version and cannot find the database in one of the default directories, open the SimaPro database server. In the list of aliases you can see the location(s) of the database directories that are being used.

4.2 Installing the update database

Download [SetupUpdateDatabase900.exe](#) and double-click the file to install the "Update900" database. You have to do this on each computer with SimaPro single user installed. For the multi-user, one installation is sufficient.

The "Update900" database will be installed in the default directory (see Box 2 above). Follow the instructions in the setup wizard. This process will install the update database on your computer, but it will not yet update the active databases.

Multi-user version: since we recommend doing the database update locally, the update database does not have to be installed in one of the locations (directory aliases) defined in the SimaPro database server. Instead, you can do the update on a local hard drive and then copy your updated database back to the server (see Box 1).

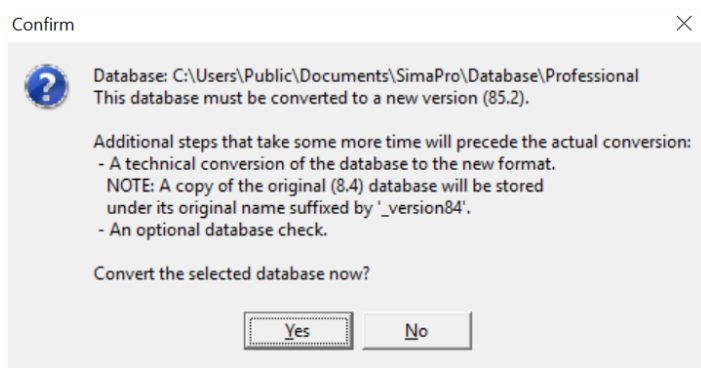
If you notice any older update databases (named Update802, Update805, Update810 or similar) and you are sure you already imported these updates, you can delete these with Windows Explorer to free up disk space and avoid confusion. To avoid deleting useful databases by accident, please open each database before deleting it to check for any projects that need to be kept.



4.3 Importing the update database

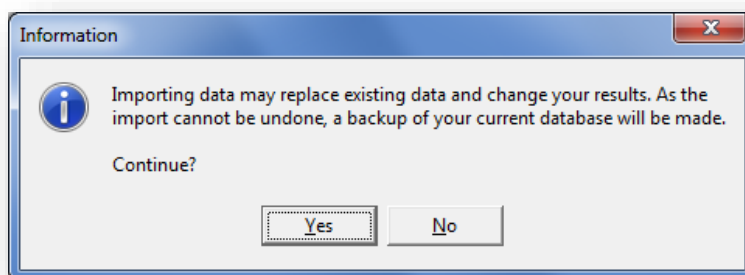
Follow these steps to import the new data:

1. Start SimaPro 9.0.0. If you have a multi-user SimaPro licence, log in as Manager. Make sure no other users are logged in at this moment, because the database will be locked during import. During the update process, users cannot log in to SimaPro.
2. Check if the database you want to update is open in SimaPro. The database name is found in the blue bar at the top of the SimaPro window. If the database is not open, go to File> Open SimaPro Database and select the database you want to update (the database you usually work in).
3. On opening the database, a technical conversion will take place. **After this conversion, you cannot open the database with older versions of SimaPro. A copy of the database (in SimaPro 8 format) will be created automatically during this process.**

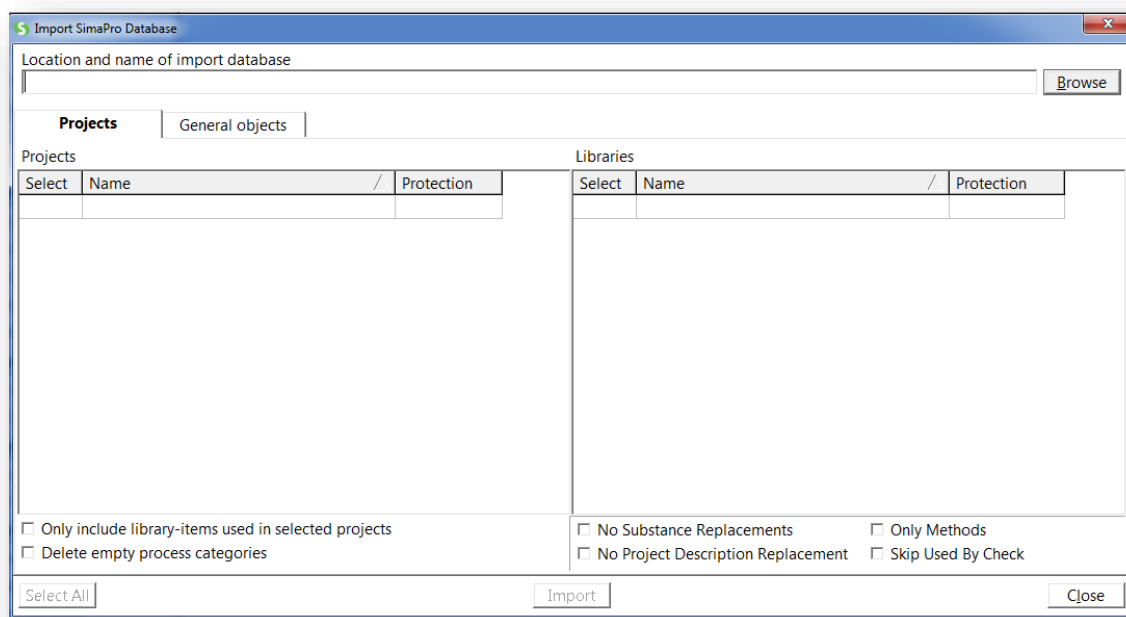


Please note that this technical conversion will only ensure that the database can be opened with the latest software – the contents of your database will remain intact until you import the update database.

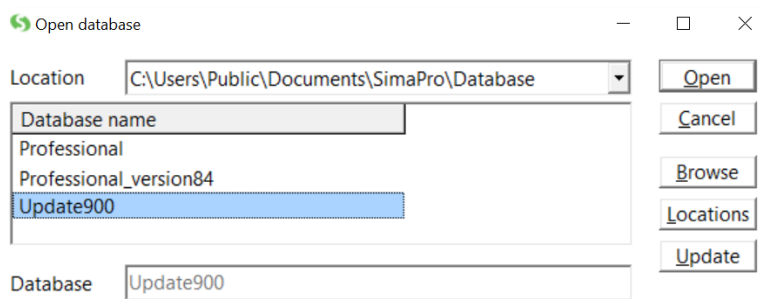
4. Go to File > Import SimaPro Database. Click “Yes” to continue when the message below appears.



5. The “Import SimaPro Database” dialogue box will appear:

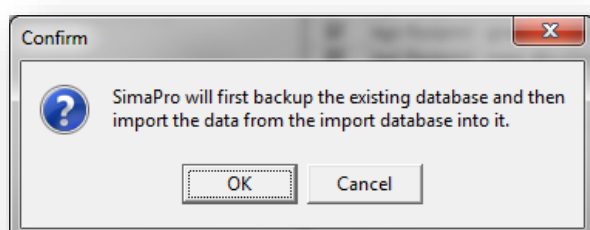


6. Click “Browse”. The update database (Update900) will appear in the “Open Database” dialogue box (in multi-user versions, the field “Server” is also shown).



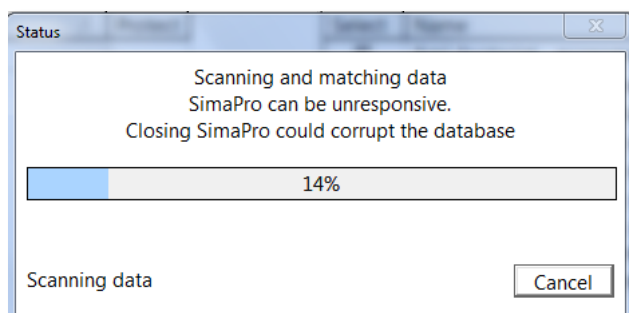
If you do not see the “Update900” database, click the “Browse” button in the Open database window. Browse to the directory where you installed the update database, select the “Update900” database (see Box 2 for the default directory) and click “OK”.

7. Click “Open”. You will see the libraries that need to be imported. Click “Select all” at the bottom left of the window. Next, click “Import”.
8. The data will be scanned and an overview will be generated of all the data that are added or replaced. We recommend that you save this overview.
9. Click “OK” to start the import process. Before data importing starts, the program will prompt you to make a backup.



After clicking “OK”, select the folder you want the save to backup file in (for example, the default directory; see Box 2). Note: if you click “Cancel”, the update procedure is stopped.

- The data in the update database will now be imported into the existing database. This step can take a lot of time and thus requires patience - **forcing SimaPro to shut down risks database damage!**



- After the import is successfully completed, your data libraries and methods should be updated (quick check: you should now have ecoinvent 3.5).

Box 3. Import errors

Should SimaPro report any import errors, please save the log file and make screenshots if possible. The overview of issues in the log file may help you to find out what went wrong. For assistance, please send an email to the SimaPro helpdesk at support@pre-sustainability.com and include the log file and any screenshots as attachments.

We appreciate it if you could include the results of the database check, which can be done via File > SimaPro Database Management > Check Database.

4.4 Appending substances

The next step is to do an “append substances” action to convert some old substance names in your database to the latest substance naming convention in SimaPro. If you do not do this, mismatches between life cycle inventory and impact assessment data may occur, leading to incorrect LCA results. The replacements are defined in the append file that is installed with the update database.

Appending merges two synonymous substance names into one. For example, CO₂ needs to be appended to Carbon dioxide, the latter being the name used in the most recent version of SimaPro and in the impact assessment methods. Without appending CO₂ to Carbon dioxide, any use of the substance named CO₂ in processes will not show in the impact assessment results.

- Go to the “Substances” section under “General Data” in the LCA Explorer screen.
- Click “Append”. A new window will open.
- Click “Load” on the right hand side and select the append file: “AppendSubstances900.xlsx”. The append file is found in the same directory as the update database (see Box 2 for default directories).
- Click “Append” on the right hand side of the window. After a final confirmation, the substances will be appended. Depending on the size of your database, this may take some time.

4.5 Updating Obsolete links in your projects to ecoinvent 3.5

Since the ecoinvent 3.4 library will be replaced by the updated 3.5 library, the majority of links to ecoinvent 3.4 will be updated automatically to ecoinvent 3.5. However, a number of processes from ecoinvent 3.4 are no longer supported and are considered obsolete.

How can I tell which processes are now obsolete?

The quickest way to review the obsolete processes is by checking the 'Obsolete' sub-categories in the ecoinvent 3.5 libraries (Material/Others/Obsolete, Energy/Others/Obsolete, etc..). In the Documentation tab of those processes, the Comment field states that the process is no longer part of the ecoinvent 3 database (see screenshot below). If you select any of those processes and click on 'Used by', you will get an overview of the projects which are using the selected obsolete process.

In addition, if you calculate a process or product stage that is or contains an obsolete process, you will get a warning message. The warning message indicates which process(es) are obsolete, and you can then replace them using the replacement files (if possible) or manually.

The screenshot shows the 'Documentation' tab of a process in ecoinvent 3.5. The 'Comment' field contains the text: 'This process is no longer part of the ecoinvent 3 database and will not be updated. Please choose another process.' This comment is highlighted with a blue box. Other fields visible include 'Generator' (generated by: [System] support@ecoinvent.org), 'External documents' (URL and Comment), 'General reference and sources' (Literature reference and Comment), 'Collection method', 'Data treatment' (extrapolations: This dataset has been extrapolated from year 2011 to the year of the calculation (2015). The uncertainty has been...), 'Allocation rules', 'Verification', and 'Production volume: 4061759759.2 kg'.

Since you may have used some of these obsolete processes in your projects, PRé has created special replacement files to allow you to change most of these obsolete links from ecoinvent 3.4 to the correct processes in ecoinvent 3.5 in a fast and easy way.

With this update, the following replacements files are available:

1. Replace EI 3.x to 3.5 APOS library
2. Replace EI 3.x to 3.5 Consequential library
3. Replace EI 3.x to 3.5 Cut off library

Please note that using the replacement files does not replace all obsolete processes. Some processes are disaggregated into more specific products or regions; in these specific cases the users should really judge themselves which activity is

the best replacement. SimaPro will generate a warning when you make a calculation and finds that an obsolete process is still being used in your model. In that case, you need to manually replace the process with a process that is more suitable.

Obsolete processes not included in the replacement files

Please review the spreadsheet '[List of Obsolete Processes without Replacement ei 3.4 to 3.5](#)' to check the reason why the ecoinvent 3.4 activity does not exist in ecoinvent 3.5 anymore.

In summary, it is recommended to first use the replacement files to replace as many links as possible. After that, if you receive a message while calculating in SimaPro that your model includes obsolete processes, you can replace those manually. How to do that is further explained in the sections below.

4.5.1 Using the replacement files

Follow the next steps for replacing the obsolete links in your project using one of the replacement files. You can also refer to [this video](#) for general instructions on using the tool: Projects to Libraries Links Manager.

1. Open a project in your updated database. This can be any project.
2. Go to Tools>Projects to Libraries Links Manager.
3. Select the project(s) of which you want to change links (press Ctrl-A to select all projects and Ctrl-Shift-A to deselect). You can use the filter to select project by (part of the) name.
4. Select the ecoinvent libraries where you want to replace the links. **Note: make sure that these ecoinvent libraries are also selected in the Libraries section in SimaPro.**
5. Click "Scan".
6. View the links found by clicking on the tab "Links".
7. Click on the "Import replacements" button.
8. Select the appropriate Replacement file which can be found in the database directory (see Box 2) and click "Open".
9. Check the links which are going to be replaced in the column "Replace name". **Note: It is possible that there are no replacements found. That means that projects you selected do not contain links that can be replaced using the replacement files. Nevertheless, there may still be some links that need to be replaced manually.**
10. Store your links in order to be able to check afterwards. It is also possible to add new replacement links yourself.
11. Click "Replace" to replace the links to the chosen library. You will get a message how many links are replaced to the chosen library.

4.5.2 Manual replacement (or creating your own replacement file)

Once you determine that your project(s) still contain obsolete links, you can replace these manually by selecting an alternative process in the relevant process/ product stages records. You can also use the Projects to Libraries Links Manager to manually replace multiple links that were not replaced using replacement files (please also refer to [this video](#) for an example)

1. Go to Tools>Projects to Libraries Links Manager.
2. Select the ecoinvent libraries where you want to replace the links. **Note: make sure that these ecoinvent libraries are also selected in the Libraries section in SimaPro.**
3. Click "Scan".

4. View the links found by clicking on the tab "Links". The column "Child name" shows the library.
5. Double click any of the empty cells you want to replace under the column "Replace name".
6. A dialogue box will open in which you can choose an alternative link in the preferred library. Use the function "Show as list" on the right hand side of the screen to list all links. Filter the links from the preferred library by entering the suffix of that library in the filter box at the bottom of your screen.
7. Choose the preferred link and click "Select".
8. You will get a message '* links referencing the same product. Use the selected replacement for them too?' These are the same links which are used in different projects or within projects. Choose "Yes" to replace all links. If you click "No" only the selected link will be replaced.
9. Click "Replace" to replace the links. If you want to replace all links at once and you did not finish the work, you can export the already selected links to Excel and import it at a later stage by clicking "Export replacements" and saving your replacement file.

You have now finished the update procedure. Repeat for any other database you wish to update.

5 Contact Us

Please contact us or your [local partner](#) if you have questions about new features in the SimaPro software or database, or if you have any other questions related to the update.

- Website: <https://support.simapro.com/>
- Email: support@pre-sustainability.com
- Phone: +31-33-4504010